

QUOTE

"The true use of speech is not so much to express our wants as to conceal them."
—Oliver Goldsmith

The Chelsea Standard

25¢
per copy

ONE HUNDRED-THIRTEENTH YEAR—No. 49

CHELSEA, MICHIGAN, TUESDAY, MAY 10, 1983

18 Pages This Week



ART FESTIVAL JURYING: Decisions on who got ribbons and honorable mentions at the league Fine Arts Festival last week-end at Chelsea High school were made Friday afternoon by Eastern Michigan University professors, John Loree and Elaine Godfrey, the two jurors for the show. Artwork was submitted by five schools and displayed for the public in the Chelsea High school cafeteria Saturday. Loree, left, and Godfrey, second from the left, were accompanied during jurying by Cathy Opoka and Kerry Kargel, Chelsea High school art teachers.

Schools Will Seek 2.9-Mill Tax Hike To Offset Lower Valuation

Chelsea school district voters will make the decision on what to do about the district's \$655,977 deficit for the 1983-84 year—the school board voted to put a 2.9 mill increase for three years on the June 13 ballot at its May 2 meeting.

What impact that millage increase would have on one's property tax bill depends on whether one's own assessment went up or down this year. All eight townships in the school district showed over-all declines in assessments.

If you had a \$70,000 house, and its assessment went down 5 percent, your property tax bill would be lower this year, even with a 2.9 mill increase.

The district's deficit is higher than what was reported in last week's issue of The Standard, because property assessments continued to fluctuate.

According to figures released May 2 after The Standard's deadline, local property tax income went down \$328,940 from the 1982-83 year because of a more than \$10 million reduction in state equalized valuations (SEV). The SEV is determined by property assessments and multiplied by the millage rate to determine one's property tax bill.

Yet that more than \$300,000 decline doesn't take into account inflation and rising costs for the 1983-84 budget.

School administrators had already cut more than \$587,000

out of the budget by eliminating \$336,269 in capital outlay for new typewriters, computers, calculators, band instruments, and furniture; four new buses, \$112,760; and the rest in items such as textbooks and supplies for all schools and programs.

The district has 34,000-gallon storage capacity for gasoline, about a half-year supply, said Fred Mills, school district assistant superintendent. The district took advantage of that storage when gas prices dropped to about 80 cents a gallon.

So he's estimating lower gasoline prices for next year and lower energy costs because of the district's energy management computer system.

Those cuts and savings still weren't enough to compensate for the property tax income decline compounded by inflation and rising costs. Because the SEV is lower, even an extra mill doesn't raise the money it once did.

If passed, the additional millage would raise \$511,566. The rest of the deficit would be paid using \$144,411 in cash balance.

That would balance the budget, which is required for school districts, and give the district a budget cushion of \$59,175, about a third of what the district usually has as a buffer, said Mills.

Who knows if there will be a tornado or windstorm next year or if OPEC will reorganize?

If the millage increase doesn't pass, the next round of cuts will affect staffing and programs, Mills told the board.

The administration had prepared a list of what more than \$600,000 in such people-program cuts would mean. The board was to decide this week exactly where such cuts would come if the millage doesn't pass.

Specifics are important to voters, it was pointed out at the meeting—2.9 mills seems an abstract figure, as does \$655,977. Most people don't make a tenth or twentieth of that.

Proposed Water Rate Hike Will Be Aired in June 7 Public Hearing

The Chelsea village council has scheduled a public hearing June 7 on a proposed increase in village water rates, amid signs that the issue may become controversial.

The hearing is scheduled for 7:30 p.m. Tuesday, June 7, in the village hall council meeting room.

Two trustees—Joe Merkel and Richard Steele—voted against the motion to hold the hearing, which was passed by a 4-2 vote last Tuesday night.

The four majority members—

Loren Keezer, Herman Radloff, Jeanene Riemenschneider and Jerry Satterthwaite—picked up on a new proposal put forward by the Ann Arbor engineering firm of Ayres, Lewis, Norris & May, consultants to the village, following an April 26 "working meeting" with the council.

As presented by the engineers, the new proposal calls for increasing water rates by a total of 56 percent in three steps beginning this year. Further hikes would be made in 1985 and 1987.

The council majority, however, endorsed only the 1983 and 1985 raises, deciding that the 1987 increase should not be decided now. "We just can't tell at this point whether we need it (the 1987 increase) or not," trustee Loren Keezer said. "I don't think we should lock ourselves in at this time."

Under the existing rate structure, adopted in 1971 and unchanged since, Chelsea users are paying an average of 65 cents per

(Continued on page five)

Zoning Variances Sought

Putting on their other hats and sitting as the Zoning Board of Appeals, the Village Council last Tuesday night referred two requests for zoning ordinance variances to the Planning Commission for study and recommendation.

BookCrafters, Inc., of 140 Buchanan St. wants to enlarge its parking lot. Zoning rules require that the lot boundary be at least 25 feet from neighboring property zoned residential. The company is seeking a variance to allow a minimum distance of five feet.

Expanding the parking lot, used primarily by employees, will ease on-street parking problems on Buchanan St., a spokesman for BookCrafters said.

The Knights of Columbus are seeking a variance in order to extend a covered porch at the back of their hall, located at 20750 Old US-12. The extension would put the porch closer to the K. of C. property lines than zoning rules allow.

In referring the two requests to the Planning Commission, the council noted that site plans would have to be submitted for review.

Junior-Senior Prom Slated Saturday

Chelsea High school junior class will host the prom for the senior class and their guests at 8 p.m. Saturday, May 14 at the high school gymnasium.

This year's theme is "Sayonara." Members of the junior class will decorate the fishbowl as an oriental garden with torches and hanging lanterns; the band, Izatso, will play from a pagoda stage, and the gymnasium will be decorated with lanterns, plants and oriental furniture.

Tables will be set up in the gymnasium and the fishbowl area. Refreshments will include fortune cookies to go along with the theme.

Juniors and seniors may either go as couples or singly. Prom co-chairmen are Leslie Koopp and Laurie Heller.

Although some proms in other parts of the country are being revived after dying during the 1970s, Chelsea's prom tradition

(Continued on page two)

Honors Banquet Slated Thursday

Twenty Chelsea High school seniors will be acknowledged at the 10th annual Honors Banquet Thursday, May 12 at the high school cafeteria for graduating with cum laude honors.

They have maintained at least a 9.5/11.0 or B+ to A—average at the end of seven semesters.

Modern Mothers Child Study Club sponsors the annual banquet for students, their parents, honored teachers (Each student nominates a teacher who has been important to them), school administrators, school board members, spouses and other guests.

Cum laude students are Sharon L. Buckenberger, Carolyn K. Chandler, Kathleen L. Degener, Kimberly A. Forner, Sharon S. Glassford, Lisa S. Hurd, David B. Kies, Patrick D. Killelea, Daniel R. Klemer, Jana L. Knickerbocker, Jeffrey S. Koepele, Eric A. Kruger, Melanie J. Lee, William R. Merkel, Miriam J. Sannes, Marie R. Sullivan, Sandra G. Sundling, Kristin L. Thomas, Matthew C. Villemure and Rodney A. Worthing.

Just before graduation, the eighth term is added in, so there may be additional cum laude honors for graduation.

At graduation, summa cum laude students, 10.5/11.0, will be honored.

Teachers whom the students have chosen to invite from the Chelsea school district are Bruce Boughner, William Coeltus, Marian Williams, Kenneth Larson, Paul Terpstra, Stephen Leith, June Winans, Roderick Janich, William Wescott, Patrick Clarke, JoAnn Thornton, Jonathan Andrews and Steven R. Bergmann. Adele Sobania from the Livonia schools will also attend, but Jeff Hargett from West Rome High school in Rome, Ga., could not make the banquet.

Guest speaker for the program is Kenneth Lautzenhelsler, liaison aide to Rep. Carl Pursell, and his topic will be, "Make for the Skies."

The Rev. Marvin McCallum of First United Methodist church will give the invocation. Chelsea High school symphony band ensemble will perform under the direction of William Gourley. Sue Riemenschneider will provide dinner music.

Louise Rohrkemper, president of Modern Mothers and mistress of ceremonies, and Ann Feeny, school board president, will pre-

(Continued on page three)



M. W. McClure

M. W. McClure Dies Sunday

M. W. McClure, former publisher of The Chelsea Standard and a leader in village civic and business affairs for many years, died Sunday, May 8, at St. Joseph Mercy Hospital in Ann Arbor at the age of 83.

Mr. McClure served as village president from 1947 to 1951, and is credited with organizing village government along its present lines and putting it on course for the future.

He was a charter member of the Chelsea Kiwanis Club which was organized in 1924, and served as its president in 1930 and 1933.

He was also a member of the Chelsea Chamber of Commerce, and devoted much time and effort to organizing sidewalk sales and other special merchandising events to boost retail business in the village.

Mr. McClure was one of nine local stockholders who organized Chelsea Products, Inc., in 1945. He served as secretary and director of the firm until it was sold to Dana Corp. in 1958.

He was manager of the Chelsea office of the Michigan Consolidated Gas Co. from 1948 until his retirement in September of 1964.

Mr. McClure purchased The Standard from O. T. Hoover in 1920 and served as its editor and publisher until April, 1947, when he sold the paper to its present owners, Walter and Helen May Leonard.

"He worked quietly but very effectively behind the scenes to improve government and business in Chelsea," Walter Leonard said. "He did many things that he did not get proper credit for. He

was one of Chelsea's outstanding citizens."

He was born Oct. 25, 1899, at Grover Hill in Paulding county, Ohio, the son of George Alexander and Lucina (Warner) McClure. The family moved to Chelsea in 1917.

On June 14, 1921, Mr. McClure married Hilda M. Riemenschneider, who survives him. She assisted him in publishing the newspaper and in managing the gas company office.

Other surviving relatives include a daughter, Mrs. F. W. (Jean) Hopkins of Vernon, Conn.; four grandchildren, Jeffrey, Carol and Douglas Hopkins of Vernon, Conn., and Mrs. John (Jennifer) Gavin of Tolland, Conn.; a great-grandson, Adam McClure Gavin of Tolland; a sister, Mrs. George (Ruth) Atkinson of Chelsea; a brother, A. B. McClure of Exeter, Calif.; and several nieces, nephews and cousins.

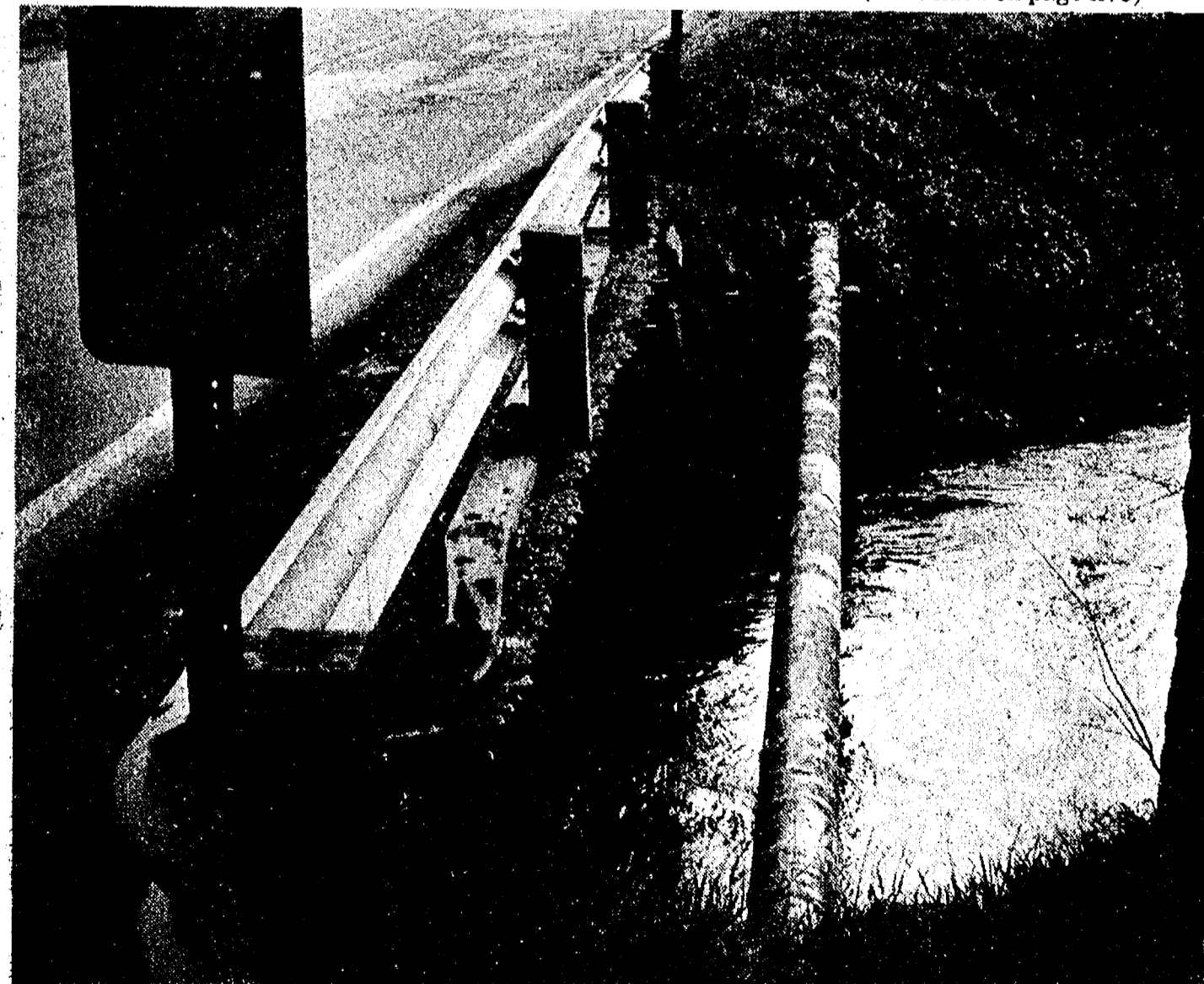
A brother, George, and three sisters, Clara, Ida and Viola, preceded him in death.

Mr. McClure was a member of the First Congregational Church of Chelsea.

Funeral services will be held at 1 p.m. tomorrow at the Cole-Burghardt Funeral Chapel with the Rev. Dale Ward of Salem Grove Church officiating. Burial will be in Oak Grove Cemetery.

Visitation hours at the funeral home are from 10 a.m. to 9 p.m. today. The family will be present to receive friends between 2-4 and 7-9 p.m.

Memorial contributions may be made to the Chelsea Kiwanis Club Memorial Fund.



BRIDGE TO BE REPLACED: The bridge over Mill Creek on Chelsea-Dexter Rd. will be replaced with a new \$151,234 span. Fletcher DesAutels, Washtenaw County Road Commission engineer, said work will begin as soon as the state gives final approval; and the natural gas transmission line alongside the bridge is moved to a safer location. The present bridge is unsafe for heavy loads, he said.

Bridge To Be Replaced

The Chelsea-Dexter Rd. bridge over Mill Creek just west of the Fletcher Rd. crossing is scheduled to be replaced, and work will begin in a few days if all goes according to plan.

Fletcher DesAutels, Washtenaw county highway engineer, said a \$151,234 contract has been tentatively awarded to Argersinger-Morse Construction Co. of Ann Arbor to put in the new bridge. The firm submitted the low bid on the project.

Because federal and state funds are involved, the contract must be confirmed by the Michigan Department of Highways and Transportation, and DesAutels said he hoped that action might be taken within the next few days.

"We want to get started by the middle of the month (May), and have the job completed by July 1," DesAutels said. "The timing is critical, because the bridge should be in place by the first of

July so that trucks loaded with wheat can get over the road to Honneger's. (Honneger's is a grain elevator storage facility located at 11800 Dexter-Chelsea Rd. just east of the Conrail railroad tracks.)

"If we're really lucky, we can get the project completed by July 1. We're going to have to close the road for about six weeks, and we want to do it at the time when it will cause the least inconvenience." (Continued on page seven)



Mr. and Mrs. David D. Harat

Child Study Club Program Book Wins State Award

Chelsea Child Study Club's program committee was honored recently by the Michigan Child Study Association for having the most unique program this year. Dotti Bell, committee chairman and club vice-president, designed the program. Each program listing activities and members was shaped like a pear, strawberry, apple or peach. Each program also had an matching-shape quilted cover hand-painted with oils.

Other members of the program committee are Anne Steinaway, Jo Ann Richardson, Carol Ghent and Kathy Frisinger. The club was awarded a certificate and ribbon at the April 30 spring planning meeting of the MCSA in Greenville.

Senior Citizens Kitchen Band Will Perform

Chelsea Senior Citizens will have both a birthday party and monthly special event Friday, May 13 at the North school senior center.

The monthly event at 6 p.m. will feature a performance of the Chelsea Senior Citizens Kitchen Band under the direction of Mary Parsons.

The meal will be baked chicken, mashed potatoes and gravy, dressing, peas and carrots, rolls, and pudding delight. Those attending should bring a place setting.

The monthly birthday party begins at 11:45 a.m. with lunch served by the Food, Fun and Fellowship program. Entertainment and refreshments (including cake) will follow lunch. Each birthday person will receive a complimentary carnation.

Reservations for both events are necessary and may be made by calling 475-9242 as soon as possible.

Brueckner-Pountney Vows Exchanged

Tina Brueckner of Haslett and Charles Pountney of Grand Rapids were married April 30 at Ascension Lutheran church, East Lansing.

The bride is the daughter of Moritz F. Brueckner, who grew up in Chelsea and now lives in East Lansing, and the late Geraldine O. Brueckner. She is the granddaughter of the late Rev. Moritz W. Brueckner, former pastor of Zion Lutheran church.



Mr. and Mrs. David Brady

Joan D. Williams, David Brady Wed in Grass Lake Ceremony

Joan Deborah Williams and David James Brady were married Friday, April 15, at the Grass Lake Lions Club with the Rev. William Stryker of Cherry Hill Presbyterian church, Dearborn, officiating.

The bride is the daughter of Jennifer Rice and the late Jerry Williams of Grass Lake. The bridegroom is the son of Jim and Shirley Brady of Dearborn.

Mary Wahl of Grass Lake was maid of honor, and Sarah Kuzelman of Gregory was bridesmaid.

Jim Robertson of Dearborn

was best man, and Steve Kuebler of Manchester was an usher.

Ken Hansen and Jan Wasilak sang with guitar accompaniment.

A reception at the Grass Lake Lions Club immediately followed the 7:30 p.m. ceremony.

Following a honeymoon cruise in the Caribbean, the newlyweds are living at 401 Adrian St., Manchester. A graduate of Michigan State University, Mr. Brady is employed by Weidmayer Farms. Mrs. Brady, a graduate of Chelsea High school, works at the Chelsea State Bank.

Co-Op Nursery Plans Drop-in Observation

Chelsea Co-Op Nursery will finish its 1982-83 school year with a week of drop-in observation May 16-20.

Parents of three and four-year-olds are invited, along with their children, to participate in classes.

The three-year-old class meets from 9 to 11:15 a.m. Tuesdays and Thursdays at 11000 Chelsea-Dexter Rd. The four-year-olds class meets from 9 to 11:15 a.m. or from 12:15 to 2:30 p.m. Monday, Wednesday and Friday.

The school, halfway between Chelsea and Dexter, has served both communities since 1957. The one-room schoolhouse with its completely fenced-in playground was built in 1916, and still looks much the way it did when it was known as Beach school.

The curriculum emphasizes self-realization through group interaction. The adult to student ratio of one to four is done with parent assistance.

Pre-school readiness skills are introduced in the three-year-old class and expanded in the older class. Kindergarten readiness screening is administered in the four-year-old class.

Students average one field trip a month, and formal hearing and vision tests are given during each school year.

The nursery is a co-operative effort, so fees are modest.

Classroom assist rates are the lowest. Each assisting member helps in the classroom once or twice a month in one of three capacities: snack for the day; curb, escorts children into and

out of the school; and extra, general help.

Teachers direct assisting parents in any other ways needed. Slightly higher rates apply to members who select the classroom non-assist option. Anyone who registers for the 1983-84 school year during observation week receives a registration fee rebate.

Refreshments will be served during class sessions May 16-20. For information, call Pat, 475-3282; Janet, 9370; or Debbie, 475-2825.

High School Band Recording Available

Orders will be taken this week for a record of music the Chelsea bands played at the district and state festivals in 1982 and 1983.

Anyone interested should call the high school at 475-9131 by April 13 and ask for Bill Gourley, band director. Record price is \$8.50.

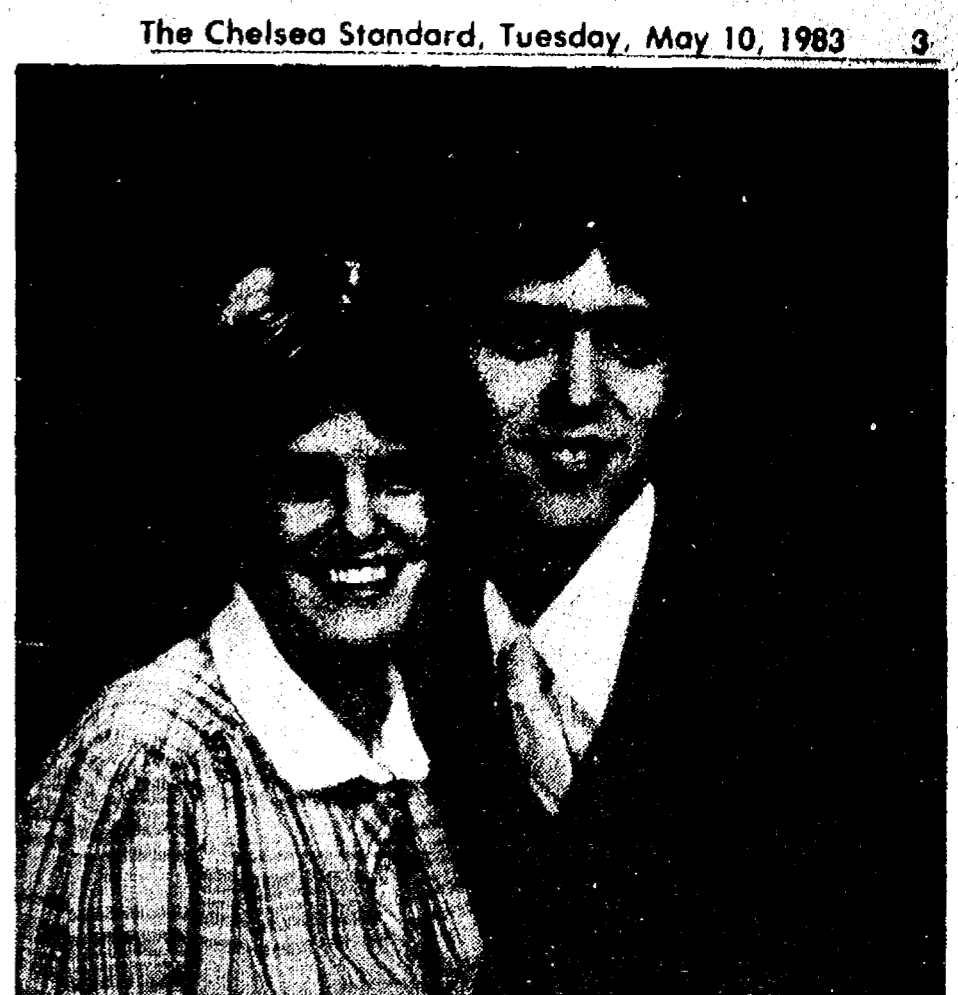
Tornado Watch In Effect Saturday But None Sighted

Tornado watch sirens were sounded in Chelsea last Saturday afternoon as part of an alert covering most of southeastern Michigan. The watch was lifted at 9 p.m., with no tornadoes reported anywhere in the state.

A heavy rainstorm moved through later Saturday night and dumped about an inch of rain on the already water-logged area. Skies cleared Sunday morning, producing a cold and windy day.

Temperatures dropped below freezing Monday morning, an unusual occurrence for May 9. May 15 is considered to be the beginning of frost-free weather in this part of Michigan.

The first state wide relief program was established in 1931 in New York, according to a publication of the U. S. Department of Labor.



LANTIS-GUENTHER: Charles and Mary Ann Heard of Gregory and Edward Lantis of Portage Lake have announced the engagement of their daughter, Jane Marie Lantis, to Todd A. Guenther, the son of Roy and Gwen Guenther of Chelsea. Miss Lantis is a 1981 graduate of Chelsea High school and is employed by Chelsea United Methodist Retirement Home. The couple is planning an October 15 wedding.

Cheryl Miller, David Harat Are Wed in Ann Arbor Church

Cheryl A. Miller and David D. Harat were married April 30 at Redeemer Lutheran church, Ann Arbor.

The Rev. Norman Maas, the bride's uncle, officiated at the ceremony uniting the daughter of Mr. and Mrs. Donald Miller of 275 Highlake, Ann Arbor, and the son of Mrs. Kathyrine Harat of 13675 Maute Rd., Grass Lake, and the late Henry Harat.

Honor attendants were Wendy Strickland of Ann Arbor and the bridegroom's brother, Matthew Harat of Grass Lake.

Bridesmaids were the bride's sisters, Barb Risner of Grass Lake and Donna Miller of Ann Arbor, the bridegroom's sister, Linda Harat of Grass Lake, and Cindy Shepherd of Grass Lake.

Groomsmen were Dennis Shepherd and Bruce Dygert, both of Grass Lake; the bride's brother, Brad Miller of Ann Arbor; and the bride's brother-in-law, Rick Risner of Grass Lake.

The bridegroom's cousin, Christopher Hoelzer of Willis, was ringbearer, and Amy Reid of Wayne was flower girl.

After a reception at the Knights of Columbus Hall in Dexter, the couple took a week-long wedding trip to Florida.

They will make their home at 13675 Maute Rd., Grass Lake.

Legal Secretaries Plan Bosses Night

Washtenaw County Legal Secretaries Association is sponsoring their annual "Bosses Night" on Wednesday, May 18 at Weber's Inn. Social hour begins at 5:30, followed by dinner and a short program. Highlighting the evening will be announcement of the "Boss of the Year."

For further information or to make reservations, call Karen Nyquist at 995-0455.



There's a whole new world out there... SOUNDINGS can help you make the move.

TARGET: Jobs for Women

A five-week program for separated, divorced or widowed women.

Beginning June 6



CALL 665-2606

E.O.O.

Enroll Now Fall/Winter Term, 1983-84

"Chelsea Charms" Baton Twirling Studio & Corps

Ages 4-18

Call Rita Howard, 996-1360

Get into Shape

SALE

20% OFF

All Jogging Outfits

for Men, Women & Children

Includes jogging suits, co-ordinated jogging separates, sweat pants and sweat shirts.

Prices Effective Now thru May 14, 1983.

DANCER'S

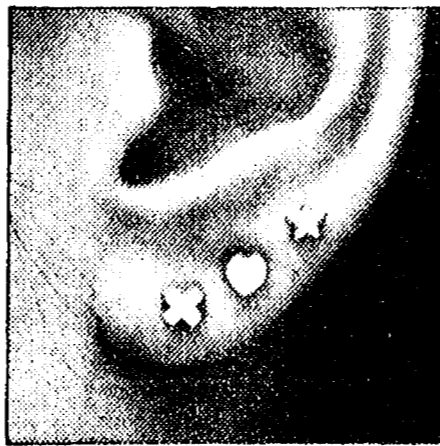
Chelsea's Friendly Dept. Store

CAROL'S CUTS

40 CHESTNUT

Monday, Wednesday and Friday 475-7094

Appts. Only 9:00 a.m. - 3:00 p.m.



Piercing your ears isn't what it used to be.

Come to us for beautifully pierced ears.

EAR PIERCING FREE with purchase of piercing earrings. Parental consent required under 18.

from \$7.00 to \$20.00

WINANS JEWELRY

Tame the SUMMER SUN KIRSCH WOVEN WOODS



30% OFF

Save energy...beautifully.

Woven woods are exceptional as protection against summer heat (and winter cold). And they'll help control sun that fades expensive furnishings. We feature Kirsch...the most respected name in window coverings.

Merkel

Phone 475-8621

'Master Canner' Classes Offered By Extension Service

Trying to keep food costs down? Concerned with salt, sugar and preservatives in your foods? Like the satisfaction of "doing it yourself" and sharing your "know-how" with others? Then the Master Canner Program offered by the Co-operative Extension Service may be made to order for you.

In a series of six classes, the Master Canner Program provides 18 hours of training and practical experience in the fundamentals of all types of home food preservation... freezing, drying, jam and jelly making and pickling, as well as water bath canning and pressure canning. Each participant will prepare and take home a sample product for each method. Methods which assure quality products which will not spoil, or cause food poisoning, are stressed in each class.

Instructors for the course are Extension Home Economists from Wayne, Oakland, Macomb and Washtenaw counties.

To maximize the spread of this information to others, participants

are expected to volunteer a minimum of 10 hours of service to promote safe food preservation. Community service options include answering telephone questions, staffing exhibits and demonstrations at fairs and markets; giving talks or demonstrations; helping with workshops; and assisting the home economist in other canning programs. The choice depends on your interest and schedule.

Master Canner certificates will be awarded to those who complete the course requirements. A course fee of \$25 includes materials and bulletins and workshop supplies.

The classes will meet from 9 a.m. to 4 p.m. Thursdays, June 16, 23, 30 and July 7 from 9 a.m. to 12 noon in the Extension Activities Room at the Washtenaw Service Center, 4133 Washtenaw Ave. (Entrance off Hogback Rd.) The same series is also offered Tuesday evenings from 7 to 10 p.m. beginning June 16 through July 28.

Advance registration is necessary since class size is limited. Phone 973-9510.

Planning Commission Hearings Slated Tonight

Chelsea planning commission will hold two public hearings on an ordinance and a re-zoning request, have a site plan review submitted by Chelsea Big Boy Restaurant, and make variance recommendations for Knights of Columbus and BookCrafters, Inc. at its 7:30 p.m. meeting tonight at the municipal building.

Donald A. Cole has requested rezoning of a lot on Madison St., bounded on the north by the railroad tracks and the south by Cemetery Dr. from agricultural to two-family residential. He plans to move a house to that lot.

The hearing on the ordinance amendment will add sign setback and permitted sign area requirements to two zoning districts, light industrial and restricted industrial.

Chelsea Big Boy plans to add an atrium to the front of the restaurant similar to the ones at the Elias Brothers restaurants on Washtenaw Ave. near Arborland in Ann Arbor and Tecumseh, said Bill Nilan, owner. Such an atrium should increase seating capacity by 40 to 50 places and create new jobs for cooks, service people and waitresses.

requirements to build an addition to their building on 20750 Old US-12. BookCrafters requested a variance for expansion of the firm's parking lot.

Chelsea Community Fair board has asked whether they must submit a site plan for a new building planned for the fairgrounds. That will be discussed at the meeting.

Marilyn Hafner Initiated into Adrian College Honor Society

Marilyn Hafner, daughter of Vincent Hafner and Wileta Hafner, both of Chelsea, was initiated as a charter member of Adrian College's chapter of Sigma Delta Pi, the national collegiate honor society in Spanish.

Hafner, a graduate of Chelsea High school, was the only junior chosen along with five seniors.

Membership requirements are completion of at least three years or the equivalent of college level Spanish, a rank in the upper 35 percent of one's class and at least a 3.0 average in all Spanish courses.

Standard Classified ads get quick results!

COUPON

DIAMOND GLASS & FINER'S 2350 W. Liberty Ann Arbor, MI 48103

25% OFF ALL SCREEN REPAIR

OFFER GOOD THROUGH MAY 31, 1983

New Owners: Jeff Barlow & Steve Payour 769-2722

Jal Indian Arts MONTH-O-MAY SALE

NOW THRU MAY 29

10% off

CARLSON COLLECTOR DOLLS

25% off

AMERICAN INDIAN HANDCRAFTED JEWELRY

50% off

POTTERY AND SAND PAINTINGS

FREE DRAWING FOR A \$100.00 CARLSON DOLL.
WINNING NAME TO BE DRAWN AT 5:00 P.M. ON MAY 29.

90 Day Layaway

PERMANENT STORE HOURS
NOON TO FIVE - WEDNESDAY THRU SUNDAY
CLOSED MONDAY & TUESDAY

929 South Main - Chelsea, Michigan
PHONE: 313/475-9453



THEY WERE WELCOMED HERE: Three young women from Ontario were stranded last week when their car broke down on I-94, but they found Chelsea a warm and friendly place to be. Left to right are Janice Los, Yolanda Groeneweg and Joanne Tamming. In background is Chelsea police patrolman Dave Dettling, who helped arrange for the girls to find hospitality in the village.

Canadian Girls With Car Trouble Find Friendly Help

Next to an accident, the worst fear of any motorist is to have a car break down on the highway far from home, friends and help. It happens sooner or later to almost everybody who does a lot of driving, but seldom does the misfortune occur in a foreign country.

This is the story of one such incident which ended about as happily as it could have under the circumstances.

Early last Monday morning three young women set out from London, Ontario, planning to make a 20-hour straight-through drive to Souix Center, Ia., and attend the graduation of a relative from Dordt College there.

All went smoothly for Yolanda Groeneweg, 24, Janice Los, 22, and Joanne Tamming, 19, as they drove west through Ontario to Windsor, crossed the Ambassador Bridge into Detroit and headed toward Chicago on I-94.

At some point their automobile's engine began to heat up, but they didn't know it because the dashboard temperature gauge wasn't working. They kept on going until the car began to billow steam from the radiator and finally conked out at about 2 p.m. near the Fletcher Rd. interchange east of Chelsea.

There they were, stranded hundreds of miles from home, aliens in a foreign land.

Good things began to happen almost right away. A trucker stopped and asked if he could help. Determining that the car was beyond quick fixing, he summoned a wrecker from Smith's Service on Jackson Rd. Smith's towed the disabled vehicle to Village Motors on S. Main St., and went a step further by taking

the girls to the Comfort Inn motel in Ann Arbor, where they spent Monday night.

On Tuesday morning they took a bus back to Chelsea, where they got some bad news from Village Motors. Their car (a five-year-old Plymouth) had a blown head gasket and other damage which would take at least until Wednesday afternoon to repair.

Now what to do?

A Village Motors employee called the Chelsea police department, and patrolman Dave Dettling took over. He arranged for the three young women to stay overnight in his sister's apartment and to eat dinner with the Dettling family.

The visitors walked around the village Wednesday morning and returned to the police station. Police dispatcher Judy Perry called The Standard, and a reporter went down to talk to the girls and get their story. They were in surprisingly good spirits, all things considered.

Next stop for the visitors was the Chelsea Milling Co. where they were given a tour of the plant, several boxes of Jiffy Mix products and a plate of fresh-baked cookies which they later shared with The Standard's staff.

A reporter took them on a quick car tour of the sections of the village which they had not been able to cover on foot, and some of the surrounding countryside.

By 4:30 Wednesday afternoon their car was ready at Village Motors, and they headed home to Ontario. So far as is known, they got there without any more trouble.

When you are interviewing three very personable and gracious young ladies together, it's difficult to remember exactly who said what, but these are some of the things they had to say about their enforced stay here:

"It was disappointing not to be able to get to Iowa for the graduation (which was held on Tuesday) because it was going to be a family gathering, but we are just awfully happy that things turned out as well as they did. It could have been a lot worse."

"Chelsea is a very pretty town, and so is the country around it. I wish we could have been here when the leaves are out. It must be beautiful then. And it must be really spectacular in the fall."

"We want to come back here some time on a vacation when we can enjoy it without having to worry about a broken-down car."

Their most enthusiastic comments, however, were directed to the local people who helped them solve their problems and offered open-hearted hospitality.

"We just can't say enough

III. COULD I ORDER SOME GRADUATION ANNOUNCEMENTS IN A HURRY?

Yes! And any of your other graduation needs too!

DAYSPRING GIFTS
116 S. Main Ph. 475-7301
Open Monday until 8:30

Senior Citizen Nutrition Program MENU and ACTIVITIES

Weeks of May 10-17

MENU

Tuesday, May 10—Beef stew with vegetables, cole slaw, biscuit with butter, baked apple. Creative expression.

Wednesday, May 11—Oven baked fish fillets, lemon, hashed brown potatoes, broccoli, roll with butter, pudding. Cards.

Thursday, May 12—Oven baked chicken, green beans, sweet potatoes, muffin with butter, fruit cup. Cards.

Friday, May 13—Pork chop suet over rice, tossed salad, wheat bread with butter, citrus fruit. Cards.

Monday, May 16—Macaroni and cheese, peas and carrots, tomato juice, whole grain bread with butter, peaches. Bingo.

Tuesday, May 17—Bean soup with crackers, spinach-lettuce salad, orange juice, corn bread with butter, cupcakes or cake. Creative expression.

ACTIVITIES

Tuesday, May 10—10:30 a.m.—Blood pressure. 1:00 p.m.—Euchre.

Wednesday, May 11—1:00 p.m.—Fitness. 1:00 p.m.—Bowling. Card tournament.

Thursday, May 12—10:00 a.m.—Ceramics. 1:00 p.m.—Needlework. 1:00 p.m.—Kitchen band rehearsal.

Friday, May 13—11:45 a.m.—Birthdays. 6:00 p.m.—Special event.

Monday, May 16—10:30 a.m.—Widows group. 11:00 a.m.—Hostess. 1:00 p.m.—Bingo. 1:00 p.m.—Building committee.

Tuesday, May 17—9:30 a.m.—Art class. 1:00 p.m.—Euchre.

Honors Banquet

(Continued from page one) sent certificates to honored students.

John Williams, high school principal, will introduce the faculty. Raymond Van Meer, schools superintendent, will make closing remarks. Charles Cameron, former superintendent who started the first honors banquet, and his wife will also attend.

The dinner is being prepared by Fran Ferry and food service staff. Modern Mothers will provide the dessert buffet. Centerpieces were donated by Walt and Sandy Zeeb.



We are pleased to announce that **KELLEY WALKOWE** will be joining Bucky's Barber Shop on May 17

Kelley graduated in 1982 from Preston's Beauty Academy and PCAS in Grand Rapids as a cosmetologist and hair designer. She is a native of the Chelsea-Manchester area.

BUCKY'S BARBER SHOP
102 N. Main St., Chelsea Ph. 475-8181

Staked your claim and ready to build?

Home mortgages are our specialty!

Building on a deserted island may be a little far-fetched, but loaning money to build homes is not. We'll be happy to answer all your questions concerning home mortgage interest rates, repayment terms and down payment needed. Stop in.

CSB CHELSEA STATE BANK

Branch Office 1010 S. Main Member F.D.I.C. Phone 475-1355

Main Office 305 S. Main

EQUAL HOUSING LENDER

1983							May 1983						
S	M	T	W	T	F	S	1	2	3	4	5	6	
7	8	9	10	11	12	13	14	15	16	17	18	19	
20	21	22	23	24	25	26	27	28	29	30	31		

COMMUNITY CALENDAR

Monday—
 The "Old Fashioned Barn Dance Committee" meeting will be held Monday, May 9, at the home of Bonnie and Gary Basso at 11000 Trinkle Rd., at 8 p.m. Be sure to come. For more information call 475-9866. xadv48

Chelsea Kiwanis Club meets every Monday, 6:15 p.m. at Chelsea Community Hospital.

Chelsea School Board meets the first and third Mondays of each month, 8 p.m., in the Board Room.

Chelsea Lioness, second Monday of each month at the Meeting Room in the Ann Arbor Trust Co. on M-52, Chelsea, at 7:30 p.m. Call 429-7179 for information.

Lima Township Board regular meeting first Monday of each month, 8 p.m., Lima Township Hall.

Parents Anonymous Group, Chelsea, A self-help group for abusive or potentially abusive parents, Mondays, 7-9 p.m. Call 475-9176 for information.

Chelsea Recreation Council 7 p.m., 2nd Monday of the month, Village Council chambers. 35tf

Tuesday—
 Rogers Corners Extension, May 17, 6:30 p.m. Zion Lutheran church, corner of Fletcher and Waters Rd. Supper at Grass Lake Cafe.

Lima Township Planning Commission, third Tuesday of each month, 8 p.m., Lima Township Hall. advx30tf

Chelsea Village Council, first and third Tuesdays of each month. advtf

Sylvan Township Board regular meetings, first Tuesday of each month, 7 p.m., Sylvan Township Hall, 112 W. Middle St. advtf

Chelsea Rebekah Lodge No. 130 meets the first and third Tuesday of each month, at 7:30 p.m.

Lions Club, first and third Tuesday of every month, 6:45 p.m., at the Wolverine Lounge. Ph. 475-2831 or write P.O. Box 121, Chelsea.

Chelsea Child Study Club second and fourth Tuesday of each month, 8 p.m. tf

Chelsea Jaycees, first Tuesday of each month. For more information call Wendall Wagner, 475-2571.

Chelsea Rod and Gun Club regular meeting, second Tuesday of each month at the clubhouse, Lingane Rd. 49tf

Wednesday—
 Lima Center Extension Group, 9 a.m. Wednesday, May 11 at Lima Hall for trip to the Space Center in Jackson. x49

VFW Post 4076 meeting second Wednesday of month, 7:30 p.m., VFW Hall, 105 N. Main.

Chelsea Communications Club, fourth Wednesday of each month, 8 p.m., Chelsea Lanes basement meeting room.

Chelsea Athletic Boosters, third Wednesday of month, 7:30 p.m., room 118, gymnasium building, Chelsea High school. Parents of athletes invited.

New Beginning, Grief Group 1st, 3rd (5th) Wednesday each month, 7:30-9 p.m., Family Practice Center, 775 S. Main St., Chelsea.

Thursday—
 Chelsea Community Farm Bureau, Thursday, May 12, at 8 p.m. at the home of Reuben Lesser, Sr. on S M-52.

Lyndon Township Planning Commission, 8:00 p.m. the second Thursday of each month. adv26tf

Chelsea Music Boosters, second Thursday of each month, 7:30 p.m., high school band room.

Knights of Columbus Women's Auxiliary, second Thursday of each month, 8 p.m. at K. of C. Hall, 20750 Old US-12.

Friday—
 Senior Citizens meet third Friday of every month, pot-luck dinner, games and cards, 6 p.m. at Senior Citizen Activities Center at North School.

Rogers Corners Farm Bureau Group, May 13, 8 p.m., at the home of Mr. and Mrs. Ernest Schiller.

Saturday—
 The 10th and final Old Fashioned Barn Dance benefit will be held Saturday, June 18, from 9-2 at the Charles Trinkle Farm, Trinkle Rd. Public welcome. Tickets \$5 each. Proceeds are donated to Chelsea and Dexter Schools and High Point Center for Special Olympics. xadv2-7

Misc. Notices—
 Faith in Action provides food, clothing and limited financial assistance based on need, as well as other services. The House is located behind the Chelsea Hospital or call 475-3305.

Home Meals Service, Chelsea. Meals served daily to elderly or disabled. Cost per meal, \$2.25 for those able to pay. Interested parties, call Barbara Branch, 475-7644 or Ann Feeney, 475-1495.

Chelsea Social Service, 475-1581, 2nd floor of Village Offices. Thursdays, 10 to 4, or if an emergency need at other times, call Linda at 475-7405 or Jackie at 475-1925.

North Lake Co-Op Nursery school is now taking enrollments for the 1983-84 year for 3- and 4-year-old sessions. Anyone interested should call Nancy Montagne, 475-1080. 2tf

Chelsea Co-op Nursery is now accepting enrollments for 1983-84 school year. Classroom assist and non-assist programs available. Please call Pat at 475-3282 or Deborah at 475-2825. advx42tf

Free blood pressure screening offered in co-operation with Chelsea Community Hospital is available to seniors at the: Dexter Senior Meals Program, the first Tuesday of every month from 11:30 a.m. to 12:30 p.m., located at the Knights of Columbus Hall, 8265 Dexter-Chelsea Rd., Dexter; Waterloo Senior Meals Program, the third Thursday of every month from 11:30 a.m. to 12:30 p.m., located at Waterloo Township Hall, Waterloo; Chelsea Senior Citizens Center, the third Wednesday of every month from 10 a.m. to 2 p.m., located at North Elementary school, Chelsea. For further information, call Julie Say, R.D., community nutritionist, 475-1311, ext. 369.



BEST-DESIGNED ROCKET: Holden Harris, left, had the best-designed rocket at Cub Scout Pack No. 455's annual rocket derby held April 24. Joe Beaudoin was second, and David Oesterle was third.



FASTEST ROCKET: Shawn McDaniels, left, had the fastest rocket in Cub Scout Pack No. 455's annual rocket derby. Bryce Hanson was second and Scott Centilli, third.

Cub Scout Pack Holds Annual Rocket Derby

Cub Scout Pack No. 455 had 38 entries in its annual Rocket Derby held April 24 at South school. Over-all winner was Shawn McDaniels; Bryce Hanson was second and Scott Centilli, third. Best design winner was Holden Harris. Joe Beaudoin was second, and David Oesterle, third. Winner for the fastest rocket

Beach School Drama Classes Prepare Plays

Beach Middle school drama classes will present three one-act plays, "The Pirates of Penzance," "The Scarlet Pimpernel" and "Oliver Twist" at 7:30 p.m. Wednesday, May 25 at the school cafeteria as their spring production. Costumes have been rented from Lansing Civic Players. Beverly Yelsik, middle school drama and art teacher, and Tim Benjamin, Chelsea High school student, are directing the production.

Two Awarded EMU Organ Scholarships

La Vonne Harris of 175 Park, Chelsea, and Fayola Ash of Ann Arbor received Grace Sponberg organ scholarships for the 1983-84 school year at the Honors Convocation April 12 at Eastern Michigan University. Grace Sponberg was a graduate student of organ in 1973 and is the widow of the late Harold Sponberg, former EMU president.

Subscribe today to The Standard.

CHELSEA SCHOOL DISTRICT GARAGE SALE

BUS-MAINTENANCE BUILDING
 OLD US-12 E.

SATURDAY, MAY 14

9:00 a.m. to 4:00 p.m.

USED DESKS - EQUIPMENT,
 BOOKS, ETC.

Attention, Ladies!

LADIES DAY

on our famous
 ALL-YOU-CAN-EAT

SALAD BAR

EVERY WEDNESDAY

(11 a.m. to 3 p.m.)

Ladies Only **\$2.50**
 Special Price

Large group reservations accepted.

Sir PIZZA

SANDWICH, PASTA & ICE CREAM SHOP
 500 N. Main, Chelsea Ph. 475-9119

"Get Ready for Spring"

CALL

KLINK EXCAVATING
 for
TOP SOIL - GRAVEL - ASHALT
475-7631

THE CAPTAIN'S TABLE

FINE FOODS AND COCKTAILS

Join Us for Our Daily
LUNCHEON AND
EVENING SPECIALS

HOURS: Monday thru Saturday . . . 7 a.m. to 9 p.m.

8093 Main St. **426-3811**
 Dexter



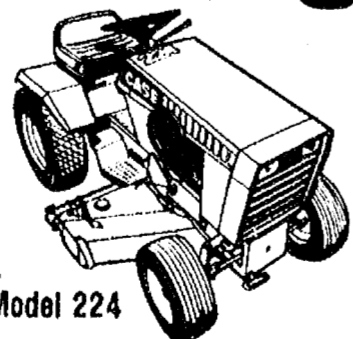
Juke Box Rentals

- for:
- ★ REUNIONS
 - ★ RECEPTIONS
 - ★ PARTIES

every special event

Zemke
 Operated Machines
(313) 662-1771

CASE Going Strong!



Model 224

Pick your power
 8 to 18
 horsepower

Case makes tough tractors. Case is HYDRIV® power. Case builds rugged attachments. Case keeps going strong season after season.

Mon.-Fri.
 9 to 6
 Sat., 9-2

Case
HURON VALLEY
GARDEN CENTER
 5024 Jackson Rd., Ann Arbor
 Ph. 662-6714

HOURS
 Sunday thru Wed. . . 6 a.m. to 11 p.m.
 Thursday 6 a.m. to 12 p.m.
 Friday and Saturday 6 a.m. to 2 a.m.

CHELSEA BIG BOY
 Ph. 475-8603
NOW OPEN TIL 2 A.M.
FRIDAYS and SATURDAYS
 1610 S. Main St. Chelsea

Italian Festival

Three Italian-style treats at special savings!
 Each comes with choice of cole slaw or dinner salad.

Veal Parmigiana Dinner

Tender veal topped with mozzarella cheese and homemade meat sauce. Comes with spaghetti and a warm garlic roll. **\$3.15** Reg. \$4.15

New! Italian Sausage Sandwich

Good 'n' spicy sausage on our own homemade sourdough roll. Comes with a side of spaghetti topped with zesty tomato meat sauce. **\$3.15**

Spaghetti Dinner

With our tangy, homemade meat sauce, parmesan cheese and a warm garlic roll. **\$1.95** Reg. \$2.95

Fresh Magic



Offer ends May 31, 1983.

Win a free trip to Rome via **PAN AM**

Not valid for cash. See Elias Brothers for details. Offer good at participating locations. Offer ends May 31, 1983. © 1983 Elias Brothers, Inc.

PROCLAMATION

OLDER AMERICANS MONTH

WHEREAS, non-profit facilities for the aging in Chelsea are providing skilled and compassionate care for older Americans, and WHEREAS, through this care, they recognize the dignity and intrinsic worth of these older Americans, and WHEREAS, non-profit facilities for the aging provide community support of the aging through their facilities, and WHEREAS, Chelsea United Methodist Retirement Home, a facility of the aging in the Village of Chelsea, has designated May 1-31 as Older Americans Month.

NOW, THEREFORE, I, John W. Merkel, as President of the Village of Chelsea, do hereby proclaim May 1-31, 1983 as **OLDER AMERICANS MONTH** in the village of Chelsea and urge the citizens of Chelsea to honor and celebrate this special event.

PROCLAMATION

Homes for the Aging Week

WHEREAS, non-profit facilities for the aging in Chelsea are providing skilled and compassionate care for older Americans, and WHEREAS, this care renders life more meaningful, dignified and joyful for elderly, and WHEREAS, the Village of Chelsea recognizes the quality service and dedication of those who provide care to the elderly in these facilities, and WHEREAS, Chelsea United Methodist Retirement Home, a facility of the aging in the Village of Chelsea, has designated May 8-14 as Homes for the Aging Week.

NOW, THEREFORE, I, John W. Merkel, as President of the Village of Chelsea, do hereby proclaim May 8-14, 1983 as **HOMES FOR THE AGING WEEK** in the village of Chelsea and urge the citizens of Chelsea to honor and celebrate this special event.

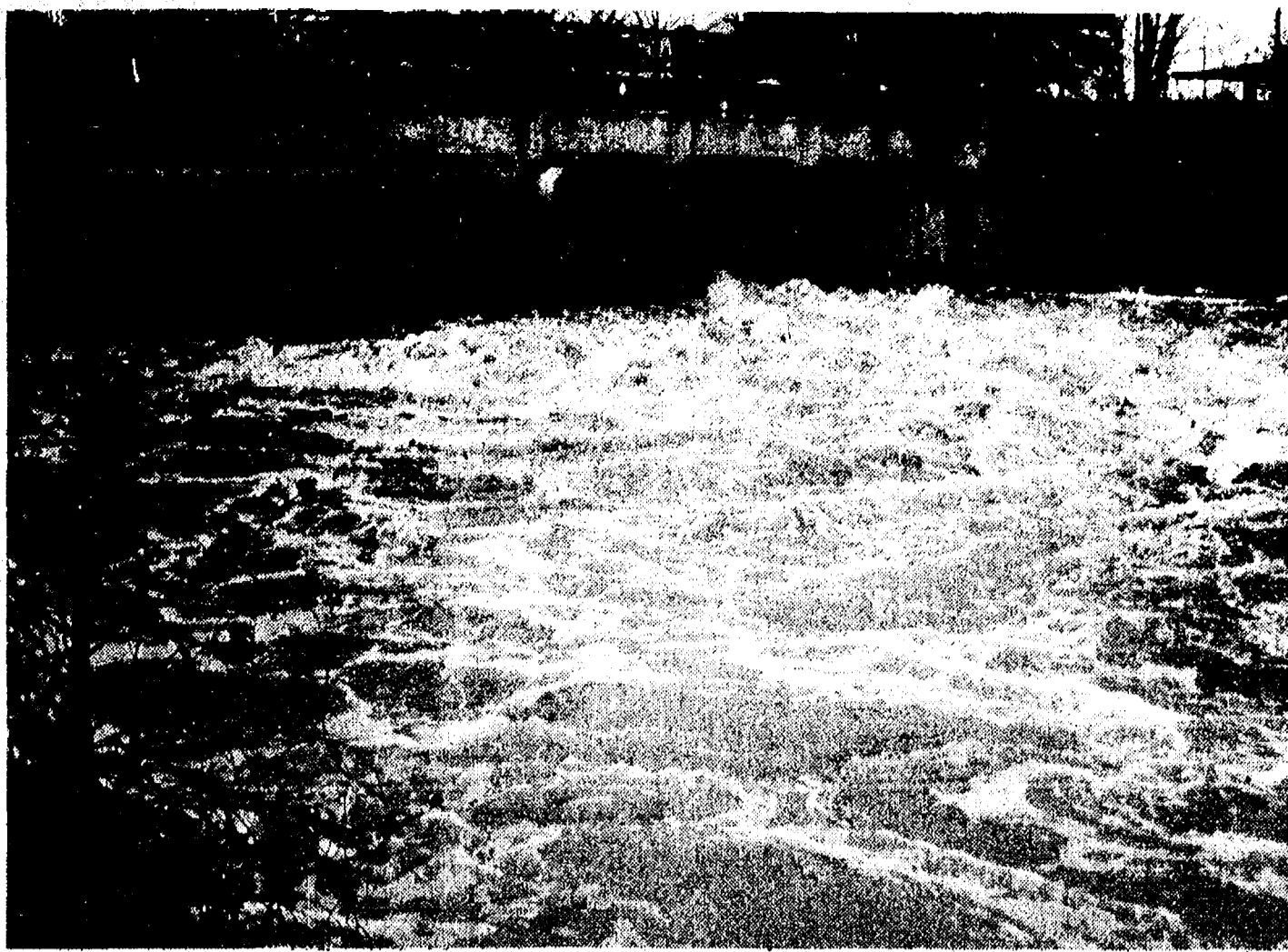
Older Americans Month Marked With Bell Ringing

Bells rang out in unison throughout the state on May 1 to mark the beginning of Older Americans Month, May 1-31, and also to designate the second week in May, May 8-14, as Homes for the Aging Week.

Throughout this month-long celebration special attention will be focused not only on the contributions and accomplishments of America's elderly, but on their special needs and problems as well. The Methodist Home honored their residents with a tea on Sunday, May 8, from 2 to 4.

Chelsea United Methodist Retirement Home has vacancies and is accepting applications for immediate occupancy in the residential area. Private rooms are available. There is no entry fee and non-Methodists are welcome. For details or an appointment, contact the administrator, Mrs. Catherine M. Durkin.

Michigan Non-Profit Homes Association, through its member facilities, provides quality health, psychological, spiritual and social care to the elderly throughout the state.



MILL CREEK ABOIL: Most streams in the area were out of their banks early last week following a series of heavy rainstorms. Mill Creek collects most of the drainage from west Washtenaw county and pours it into the Huron River at Dexter. This is how Mill Creek looked last Tuesday as it boiled under the bridge on Dexter's Main St.

Bridge Replacement

(Continued from page one)

nience to motorists and the least damage to the local economy.

"The contractor is anxious to start. All we need is a green light from the state. I hope we will see progress before this month is over."

DesAutels added that one other possible source of delay is a natural gas transmission line located on the south side of the bridge. The pipe belongs to Michigan Consolidated Gas Co. and will have to be moved before the bridge work begins.

"I think the company will cooperate in relocating the line. They have been working with us on surveys to determine where it should be moved."

Money for replacing the bridge became available through the "critical bridges" program recently authorized by the federal government as part of a nation-wide effort to upgrade deteriorating portions of the highway system, and also to provide jobs in the depressed construction industry.

Special Olympic Invitational Track Meet Slated Friday

The fourth annual Chelsea Invitational Special Olympic Track Meet will be held from 10 a.m. to 1:30 p.m. Friday, May 13 at the Chelsea High school track.

More than 125 competitors are expected from Chelsea High, Beach Middle, South Elementary, Bates Elementary, Wylie Middle, Dexter High, Willow Run Kaiser Elementary, High Point and Abbot Elementary schools and Mack Young Adult Program.

Volunteers from Dexter High school student council and Boysville in Clinton will help officiate. Chelsea Lioness Club is packing lunches for competitors.

Balloon Released Here Found Same Day in Ontario

A helium-filled, dimestore balloon set aloft from Chelsea April 29 was found the same day 250 miles away on an Ontario farm.

Richard Martin, 8, found it in the middle of a field on the family farm near St. Jacobs, Ontario.

Using the message attached to the balloon string, he and his father wrote the Chelsea Community Hospital child care center. Children there had set the balloon aloft in observance of April as national month of the young child.

Organ Recital Slated Sunday At St. Paul's

An organ recital will be presented at 4 p.m. Sunday, May 15 at St. Paul United Church of Christ by Deborah Friauff, staff organist of the church, and Timothy Huth, a graduate student in organ performance at University of Michigan.

The concert will feature works by Simon Preston, J.S. Bach, Cesar Franck, Jehan Alain, Charles Tournemire and Searle Wright.

Friauff, a graduate of Interlochen Arts Academy, is now a senior at University of Michigan, studying organ with Marilyn Mason. Last May she participated in the historic organ tour of France, and she played in churches such as Cathedrals of Poitiers and Notre Dame de Paris.

Huth has studied with James Kibble of the University of Michigan, Catherine Thredt at Heidelberg College, Tiffin, O., Douglas Reed of University of Evansville, and received a Bachelor of Philosophy degree from St. Meinrad College in Indiana. Last summer he also toured France, playing historic organs in Notre Dame, Dijon and Lyons. He recently gave recitals in New Riegel and Toledo, O.

The community is invited to attend.

DRAINS and SEWERS CLEANED ELECTRICALLY

SINKS
SUMPS
TOILETS



FLOOR
DRAINS

MAIN
LINES

STORM
SEWERS

PROMPT SERVICE

SEPTIC TANKS-Cleaned, Installed, Repaired.
DRAINFIELD & OTHER EXCAVATING

RESIDENTIAL • COMMERCIAL • INDUSTRIAL

BOLLINGER SANITATION SERVICE

PHONE (313) 475-2097

All New! PIZZA

PIZZA * PIZZA

We have given our famous pizzas an extra touch with MORE CHEESE and a SPICIER SAUCE.

Special Introductory Offer

- BUY ANY SMALL (8") PIZZA AT REG. PRICE and get 2nd IDENTICAL PIZZA for only **50¢**
- BUY ANY MEDIUM (10") PIZZA AT REG. PRICE and get 2nd IDENTICAL PIZZA for only **\$1.00**
- BUY ANY LARGE (14") PIZZA AT REG. PRICE and get 2nd IDENTICAL PIZZA for only **\$2.00**
- BUY ANY PARTY (18") PIZZA AT REG. PRICE and get 2nd IDENTICAL PIZZA for only **\$3.00**

Try One . . . You'll Like It!
Offer Good Mon., Tues., Wed. Only!

OFFER GOOD NOW THROUGH MAY 31, 1983

PLEASE CALL TODAY — 475-9119

Open Mon. thru Thurs., 11 a.m. to 11 p.m. Fri. & Sat. 11 a.m. to 12 p.m. Sun., 11 a.m. to 10 p.m.

Sir PIZZA

Sandwich, Pasta and Ice Cream Parlor
500 MAIN ST., CHELSEA, MICH. PHONE 475-9119

High interest, flexible protection, payments to suit you, and a non-smoker's discount. . .

That's Universal Life

The policy of the future is here. Universal Life from Farm Bureau Life Insurance Company of Michigan gives you low-cost life insurance protection while paying a high rate of interest on your cash accumulations. It's so flexible that you can tailor your policy—and payment plan—to change with your needs.

All this—plus the tax-deferred interest and non-smoker's discount—make Universal Life the perfect policy for today and for the future.



DAVE ROWE, CPCU
121 S. Main, Chelsea, Mich. 48118
(313) 475-9184

We're working to make your future a little more predictable.



SPECIAL SALE

Spring, Summer and Year-Round
SUITS

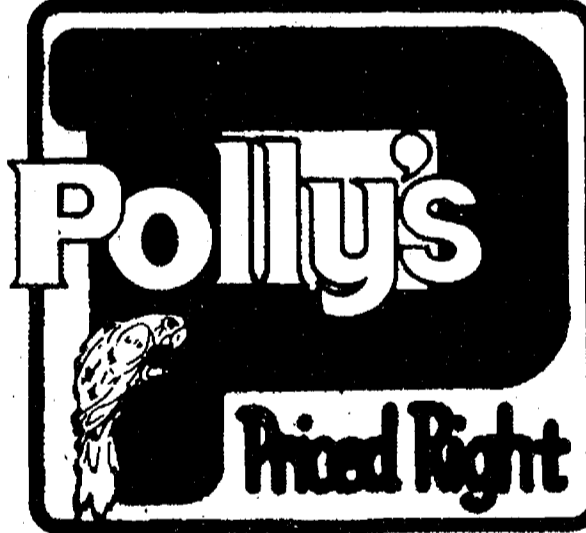
SPORT COATS

30% to 50% OFF

Strieter's Men's Wear

Since 1914

HIGH ON QUALITY . . . LOW ON PRICE!



1101 M-52 CHELSEA STORE ONLY
Prices Effective May 10th thru Monday, May 16th

VINE RIPE TOMATOES

59¢

GARDEN FRESH
GREEN ONIONS 4 bunches \$1

8-OZ. CELLO PAK
RADISHES 4 for \$1

WESTERN SIZE 18
CANTALOUPE . . \$1.19

LB.

SIZE 88
NAVEL ORANGES 10/99¢

SPANISH ONIONS . lb. 25¢

Garden Fresh
BROCCOLI

Large Bunch

79¢

U.S. No. 1 Michigan
IDA RED APPLES

3-lb. bag

79¢

MANUFACTURER'S DOUBLE COUPONS!

All manufacturer's coupons up to 40¢ or less will be redeemed at double their face value up to the price of the coupon item!

Limit one coupon per item. Free coupon and coupons over 40¢ will be redeemed at face value only. Excludes beer, wine and liquor. One coupon per family.

TUESDAYS ONLY!

Applications Sought For Scholarships

Applications for four \$500 scholarships to be awarded by Chelsea Community Hospital Auxiliary are due June 10.

Three of the scholarships are to be given to students from the hospital service area directly involved in a health career program. Selection is based on academic achievement and intent to further education in a health career.

The A. A. Palmer Memorial Scholarship is given to a Chelsea High school graduate who is pursuing a career in medicine, primarily family practice. The award is based on academic achievement, extra curricular activities and motivation to pursue a medical career.

The Palmer scholarship was set up in 1972 as a memorial to the

late Dr. A. A. Palmer by a group of local physicians.

The auxiliary's activities, such as the upcoming community flea market, fashion shows and the hospital gift shop, fund the three health careers scholarships.

Interviews are tentatively planned for June 20. Auxiliary members serving on the scholarship committee are Jean Mann, chairman; Marsy Doan and Gayle Olson.

Applications may be picked up at the information desk of Chelsea Community Hospital, inside the main entrance, or at the switchboard.

A letter of recommendation and letter of reference are required. Applications must be received by the committee by June 10.



PEACE POSTERS: Ten local sixth, seventh and eighth graders made posters which will be displayed at "The Threat of Nuclear War to Children and Youth" conference May 14 at Wayne State University. Poster makers are Leah Enderle, left, Karen Grau, Sally Wilson,

Julie Stacey, Heidi Knickerbocker, John Cattell, Kevin Flanigan, Shannon Du Russell, Mike Shoemaker and Kristy Roberts. Dan and Bob and Blumenauer are not pictured.

Middle School-Age Children Show Nuclear Threat Feelings in Posters

Anyone born after 1945 has lived his or her whole life under the spectre of THE BOMB.

Development Council Director Will Speak Here

Michael S. Amman, executive director of the Washtenaw Development Council, will be the speaker in the third and final Community update program sponsored by the Ann Arbor Trust Co.

The breakfast meeting will begin at 8 a.m. Wednesday, May 18, in the private dining room at Chelsea Community Hospital, according to William J. Bott, manager of the trust company's Chelsea branch.

Amman's topic will be "The Outlook for Industrial Development in Washtenaw County."

The development council was formed several months ago with the aim of co-ordinating industrial development on a county-wide basis. Its present membership includes the cities of Ann Arbor and Ypsilanti, their chambers of commerce, and four eastern townships.

Middle school-aged children from three area churches made posters showing their feelings and attitudes about nuclear war and peace to be displayed at the conference Saturday, May 14 on "The Threat of Nuclear War to Children and Youth" at Wayne State University.

After the conference, the exhibit will travel to YMCA's around the state.

Children had two themes to choose from, "What Peace Looks Like to Me" and "How Peace Can Come to the World."

Local children whose posters were chosen to be included in the display are Leah Enderle, Karen Grau, Sally Wilson, Julie Stacey, Tony Flintoft, Heidi Knickerbocker, John Cattell, Kevin Flanigan, Shannon Du Russell, Mike Shoemaker, Kristy Roberts, and Dan and Bob Blumenauer.

They were sponsored by Chelsea Church Women United and attend three local churches, St. Paul United Church of Christ, Zion Lutheran church and St. Barnabas Episcopal church.

The conference is open to the public. It will be from 10 a.m. to 6:30 p.m. May 14 at the Wayne State general lectures building. Featured speaker is Robert J. Lifton of Yale University, who has worked extensively with survivors of Hiroshima.

Chimney Fire Causes Only Minor Damage

Chelsea firemen responded to a chimney fire alarm at 14261 Waldo Rd., Sharon township, early last Saturday morning. Damage was minor.

Canton Man Arrested on Sex Charge

Gary O. Coleman, 37, of Canton, has been charged with second degree criminal sexual conduct for allegedly molesting at least 11 boys aged 6 to 9 at the Bruin Lake campground in the Pinckney Recreation Area.

After being arrested by detective Paul Wade of the sheriff's department, Coleman was arraigned last Saturday night and released on \$50,000 cash bond pending appearance in court.

Wade said evidence shows that the molestations have been carried on for a period of about two years, and occurred in a camping vehicle owned by Coleman. One of the boys told his mother about what had occurred, and the investigation and arrest followed.

"There are at least nine families involved," Wade said, "all from the area where Coleman lives. He invited the boys to go on camping trips with him. So far as we know, no local children were involved."

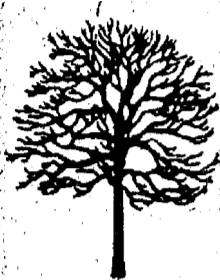
Committees Named For Community Flea Market

Committees for the community flea market May 21 at Chelsea High school have been announced.

The flea market is being sponsored by Chelsea Community Hospital Auxiliary. Ann Lee is over-all chairman; Gale Johnson, food; and Shirley Schable, publicity.

Gloria Mitchell, ways and means chairman for all auxiliary projects, is also involved.

In 1967 the first federal legislation to prohibit age discrimination in employment — the Age Discrimination in Employment Act — was passed, according to a publication of the U. S. Department of Labor, "Labor Firsts in America."



THE ENVIRONMENTAL SERVICES GROUP

P.O. BOX 4370 ANN ARBOR 48106

- AQUATIC WEED CONTROL
- LAWN & LANDSCAPE MGMT.
- LANDSCAPE PEST CONTROL
- MOSQUITO CONTROL
- ORCHARD MANAGEMENT
- WOODLOT MANAGEMENT
- SPECIAL PROJECTS

For a FREE Consultation, Clip and Mail This Coupon

NAME _____
 ADDRESS _____
 CITY _____
 PHONE _____

5/10/83

Simplicity

CUT THE PRICE OF CUTTING GRASS.

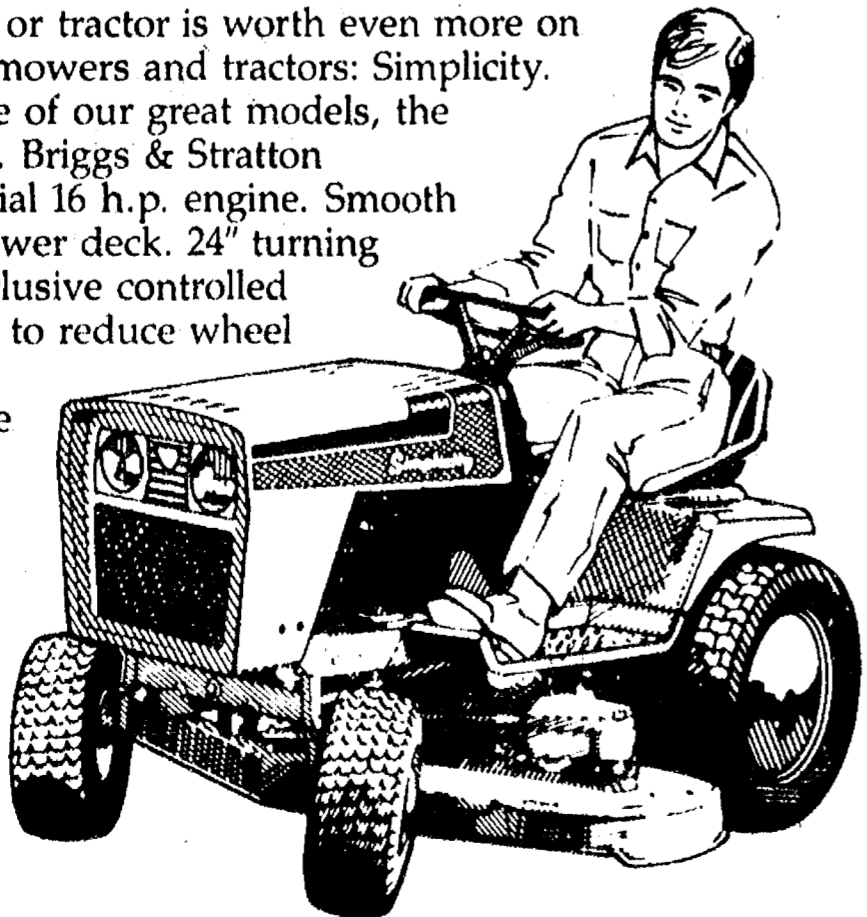
Super Trade-In Days Sale

Special prices and liberal trade-ins.

Your old mower or tractor is worth even more on the best values in mowers and tractors: Simplicity.

Just compare one of our great models, the 6216 garden tractor. Briggs & Stratton industrial/commercial 16 h.p. engine. Smooth cutting floating mower deck. 24" turning radius. And an exclusive controlled traction differential to reduce wheel spin.

It's the best value around. And with your trade-in it's even better. But better hurry!



Super Trade-In Days

CHELSEA HARDWARE GARD 'N SAW ANNEX

120 South Main St.

Phone 475-3227

PARK ST. PRODUCE

137 Park St. Facing Municipal Parking Lot, CHELSEA

Serving the community with quality fresh produce year around . . . in and out of season.

HOURS: Monday thru Saturday, 9 a.m. to 7 p.m. Sunday, 10 a.m. to 2 p.m.

<p>U.S. NO. 1 Sweet, White Seedless GRAPEFRUIT</p> <p style="font-size: 2em;">5 for \$ 1.00</p> <p style="font-size: 0.8em;">Repeat of a Sell-Out!</p>	<p>SUN GIANT BRAND SHELLLED CALIFORNIA ALMONDS</p> <p style="font-size: 1.5em;">Only \$2.00 lb.</p>
<p>U.S. NO. 1 RIPE, JUICY D'ANJOU PEARS</p> <p style="font-size: 1.5em;">49¢ lb.</p>	<p>To introduce our new and complete line of famous EDEN HEALTH PRODUCTS</p> <p style="font-size: 0.8em;">We're Featuring</p> <p>GRAPE JUICE 24 oz. \$1.00 APPLE-RASPBERRY JUICE 24 oz. \$1.50 APPLE-CRANBERRY JUICE .qt. \$1.25</p> <p style="font-size: 0.8em;">Come see our complete line.</p>
<p>We now have a large selection of BEDDING PLANTS</p> <p>FLOWERS 59¢ pkg. VEGETABLES '6.75 flat GROUND COVER</p> <p style="font-size: 0.8em;">Hardy - Healthy - Ready to Plant!</p> <p style="font-size: 0.8em;">Also, a new variety of Hanging Plants at prices we've become known for.</p>	<p>BULK NUTS - BEANS - PEAS WHITE & BROWN RICE HANGING PLANTS WIDE VARIETY OF TEAS</p>
<p>WHOLESALE DELIVERIES PHONE-IN ORDERS</p> <p>MILLPOND BAKED GOODS ALBER'S APPLE CIDER</p>	<p>WILSON'S HOMO WHOLE MILK</p> <p style="font-size: 1.5em;">\$1.79</p> <p style="font-size: 0.8em;">Plastic Gallon</p> <p style="font-size: 0.8em;">½% LOW FAT — gal. \$1.49</p>

OPEN SUNDAYS, 10 a.m. - 2 p.m.

— SUNDAY ONLY SPECIALS —

<p>BEDDING PLANTS FLOWER & VEGETABLE PLANTS</p> <p style="font-size: 1.5em;">49¢ pkg.</p>	<p>MIXED NUTS</p> <p style="font-size: 1.5em;">Only \$3.50</p> <p style="font-size: 0.8em;">Reg. \$4.39</p>
--	---

Come in and See Our New Display of Natural Candies, Dried Fruits and Nuts

Village Taxes Will Stay About Same

Chelsea's village property tax rate for operations will go up this year, but revenues will go down. Most property owners will see very little difference in their village tax bills, although they could rise or fall a bit depending on individual assessments. Amounts involved will be small in any case.

If that is confusing, you should listen to and try to figure your way through an explanation of what is going to happen. Administrator Frederick A. Weber, who presented the numbers to the village council last Tuesday night, acknowledged that they may be subject to slight adjustments as more information is obtained and put through the calculating machine.

"It has been very difficult to get reliable information on what the village's state equalized valuation (SEV) really is," Weber explained. "I believe the numbers we now have are right, but they could still be changed. They've been changing almost every day."

Taxes are levied on the SEV, which is supposed to represent 50 percent of the true market value of property.

Chelsea's 1982 SEV was \$48,581,241. It has been dropped to \$44,989,063 for 1983, reflecting Michigan's depressed economy

and a consequent loss of real estate values in terms of what property can be sold for.

In preparing the 1983 village budget, which was adopted last March, Weber anticipated a drop in the SEV, but not that much. "I figured on around 3 percent," he said. "It turned out to be about 7.5 percent. That seems awfully high to me, but it's the figure we've been given. I honestly don't believe property values here have gone down that much in the past year."

Last year the village levied 7.327 mills on its \$48.6 SEV and raised \$358,824 for its general fund.

Under the so-called "Truth in Taxation" law enacted by the Legislature in 1982, the village can compensate for this year's SEV loss by increasing its millage rate, so long as total taxes collected do not exceed those of the previous year.

Applying a complicated formula prescribed by state law, Weber came up with a proposed 1983 village tax rate of 7.74 mills. That is .413 higher than last year, but it will raise only \$351,100 when levied against the lower SEV.

"That will leave us \$7,500 short of what we projected when we adopted the budget, but I think we can live with it," Weber told

the council. "We can find ways to save \$7,500."

To increase the millage rate beyond 7.74 would require an elaborate process of public hearings and council approvals, and Weber recommended against that.

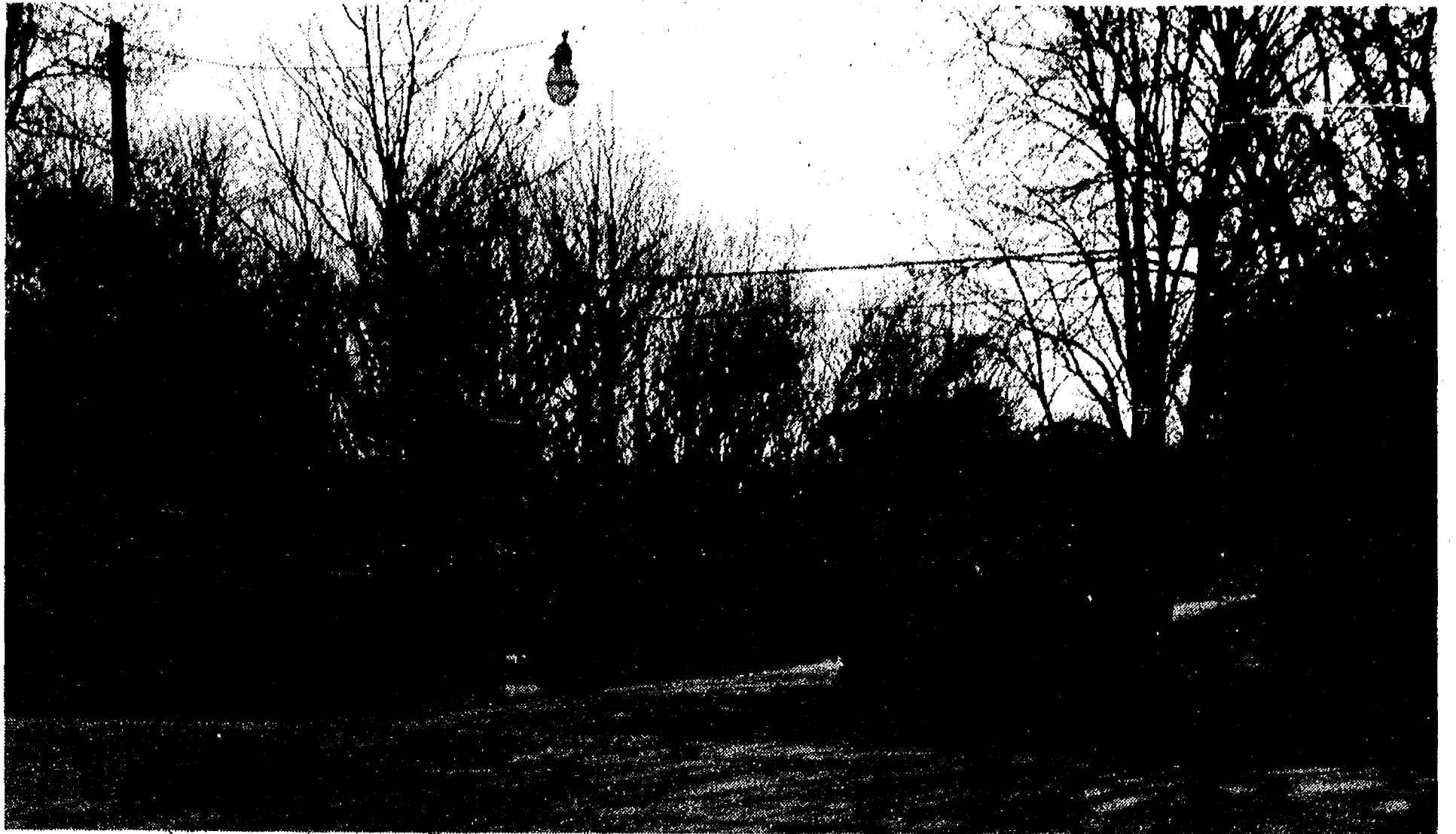
He pointed out that the Michigan Legislature recently boosted the state income tax rate by 38 percent, the Board of County Commissioners is planning to jack up the county tax rate, and the Chelsea board of education is asking for an increase of 2.9 mills at the June 13 school election.

"I suggest the village would be wise to hold the line and not ask for any more tax dollars," Weber said. The council informally concurred but put off final action until the figures are definitely known to be firm.

Besides the 7.74 mills for village general fund operations, these additional rates prescribed by law would be levied:

Village Library Fund—.58 mills, up from .55 last year. Because of the lowered SEV, this would result in a small loss of revenue to the library fund, which received \$26,935 last year and would get an estimated \$26,310 this year.

Debt service—.93 mills, which would yield \$42,185. Last year's levy was .659 mills, for \$32,273.



CEMETERY ENTRANCE: The Oak Grove Cemetery board has asked the village of Chelsea to share the cost of refurbishing the cobblestone pillars (top photo) at the Madison St. entrance to the cemetery. The village council, in turn, wants to do something about cleaning up the land adjacent to the cemetery drive (bottom) which is swampy and presently inundated by recent heavy rains.

More money is needed this year because bond payoff schedules require it.

Sewer bond issue—.38 mills

(Continued on page 17)



Help Asked To Improve Oak Grove Cemetery Entrance

Oak Grove Cemetery board has asked the village of Chelsea to pay half the cost, estimated at between \$4,800 and \$5,200 to repair the cobblestone pillars at the Madison St. entrance to the cemetery.

The village council, in turn, wants to know if the land alongside the drive into the cemetery can be cleaned of trash and brush and kept that way. At least part of the property is not owned by the cemetery board, and the council instructed administrator Frederick A. Weber to determine who does own it, im-

plying that the village might do the clean-up work and bill the owner for it.

Weber said last Friday that he had not yet traced the ownership, which will be difficult because there are no posted property lines.

A reporter's visual inspection showed that the land in question is swampy and is flooded by recent heavy rains. A couple of water-filled ditches appeared to be stagnant. Vegetation consists of a fairly dense growth of swamp tree and shrub species. There was little evidence of trash,

which might have been covered with water.

"I don't think the area is being used as a dump or a junkyard," Weber said. "The litter that gets in there probably blows in."

The pillars look to be in good condition, but Weber said he has been informed that the mortar holding the cobblestones together is getting soft. He added that the cemetery board would like to restore lamps which formerly were atop the pillars.

Council took no formal action pending further investigation.

Always Open. Never Closed.

ANN ARBOR TRUST COMPANY

CASHPORT

CASHPORT

24 Hour Banking

Now, you can take care of your banking needs at your convenience.

Gone are the days of waiting in line on your lunch hour or hurrying to get to the bank before it closes.

And, you don't have to worry about running out of cash on weekends or holidays.

CashPort. Always open. Never closed.
Your private passport to 24 hour banking.



24 Hour Banking has come to Chelsea!

...now, do your banking anytime you want.

1478 Chelsea-Manchester Road, CashPort machine located in front of building

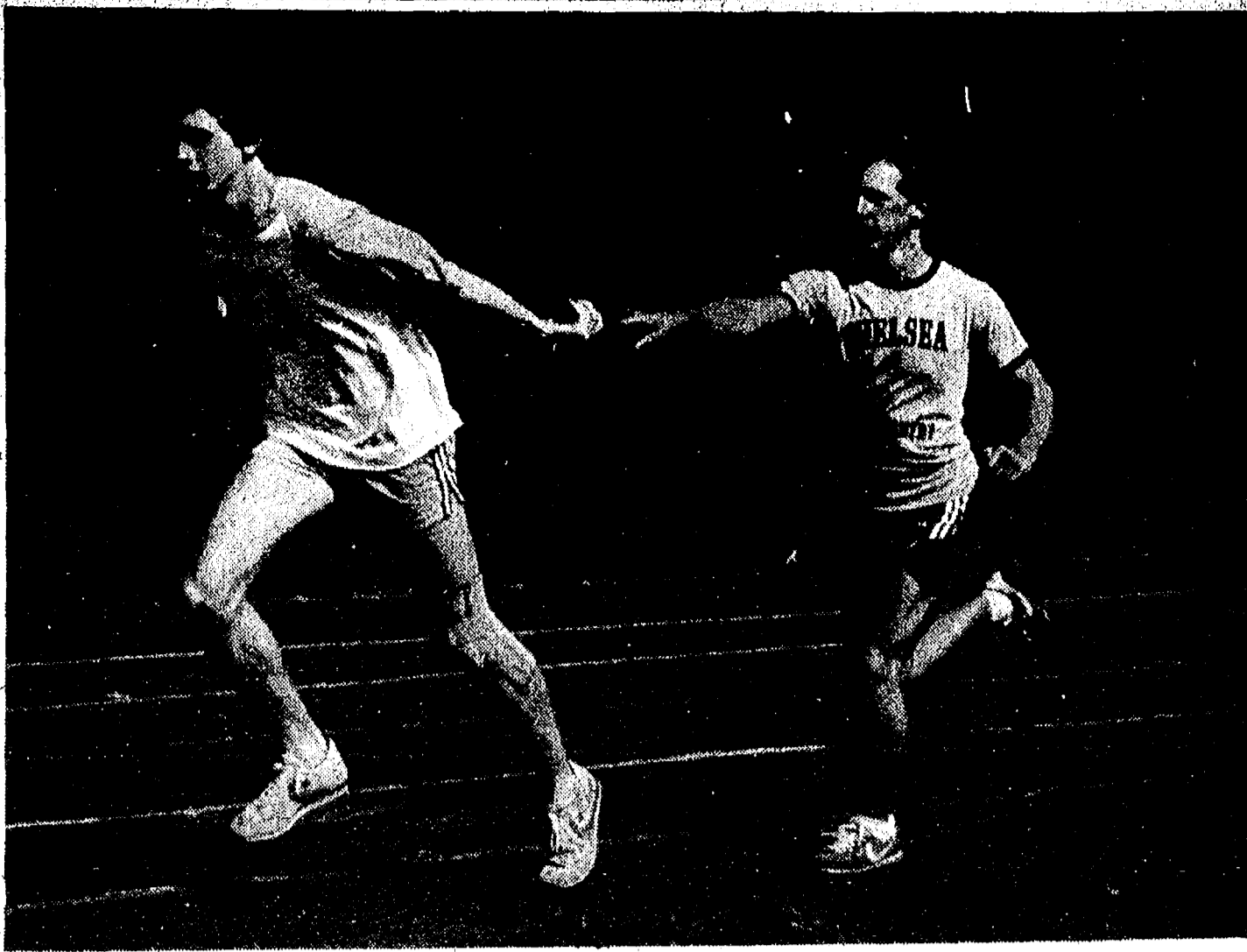
CHELSEA McDONALD'S MAKES BREAKFAST WORTH WAKING UP FOR!

We have the **BEST & LOWEST PRICED BREAKFASTS AROUND!**

- SCRAMBLED EGGS, SAUSAGE
- ENGLISH MUFFIN, HASH BROWNS . . . \$1.39
- HOT CAKES & SAUSAGE 99¢
- EGG McMUFFIN 99¢
- HOT CAKES 69¢
- SCRAMBLED EGGS & MUFFIN 79¢
- COFFEE 10¢

BREAKFAST HOURS:
Mon. thru Sat.
6 a.m. to 10:30 a.m.
Sunday - 7 a.m. to Noon





PASSING THE BATON: The secret to good relay running lies as much in passing the baton from one runner to the next as it does in speed. A messed-up exchange can spoil an otherwise good effort. Here, Kevin Richardson (right) makes a perfect pass to Randy Krichbaum who is in full stride as he takes off on his relay leg.

Girls Track Team Defeats Lincoln

Bulldog girls track team swept three events on their way to a 78-45 win over Lincoln May 5 at Milan.

Along with 1-2-3 sweeps of the two-mile and mile, Chelsea took the first five places in the 440, quite an accomplishment, said coach Bill Bainton. Chelsea also was 1-2 in the shot put and 880.

It was the Bulldogs first league win. They are now 2-4 over-all and 1-3 in the Southeastern Conference.

Sandra Frame was the only double winner, in the mile and two-mile. The mile relay had a good time for this time of the season, said Bainton.

Sue Oesterle broke 30' for the first time in the shot put; Kay Bauer had a career best in the discus; Laura Heeter took third in her first-ever 440 run; and Sue Young had a good time in the 100 running against Marlene Cox, one of the best sprinters in the league.

Sharon Glassford won the high jump in a jump-off, the sudden death of high jumping. Both she and the Lincoln jumper had gone 4' 10" with the same number of misses. For a jump-off the bar is set at different heights. The tie is broken when one girl makes a jump the other one doesn't.

Event results follow:
Shot put—Sue Oesterle, first, 30' 3"; Sharon Glassford, second, 28' 7".
Discus—Kay Bauer, first, 78' 5 1/2".
High jump—Glassford, first, 4' 10".
Long jump—Sue Young, first, 13' 11".

100 hurdles—Amy Wolfgang, second; Debbie Tift, third.
100—Young, second, :12.8.
Mile—Sandra Frame, 5:58; Pam Buckberry, second; Wendy Wolfgang, third.
440—Carol Warren, first, 1:04.7; Laura Damm, second; Laura Heeter, third; Crysta Forath, fourth; Dawn Zaines, fifth.
330 hurdles—A. Wolfgang, second; Tift, third.
880—W. Wolfgang, first, 2:35.2; Stephanie Roberts, second.
220—Carolyn Chandler, second; Young, third.
Two-mile—Frame, first, 12:33.6; Kim Collins, second, 12:42; Mary Ann Richardson, third, 12:51.
Mile relay—Warren, A. Wolfgang, W. Wolfgang, Damm, first, 4:19.6.

Girls Track Team 6th in Cardinal Relays

Bulldog girls track team took sixth at the Cardinal Relays May 7 at Michigan Center.

Chelsea running was consistent with recent times and expectations, said coach Bill Bainton. Several relays, especially the sprint medley, had nice baton exchanges, which is important in an all-relay format meet.

Debbie Tift and Amy Wolfgang had their best hurdles runs of the season. Wolfgang also had a fine anchor leg for the sprint medley. Sandra Frame ran a fine two-mile time of 12:02 to anchor the distance medley, and Wendy Wolfgang anchored the two-mile relay which nudged Saline by a second.

Chelsea has a bigger team this year, and scoring was spread among more team members than in the past.

Taking third places were the distance medley, Kim Collins, W. Wolfgang, Mary Ann Richardson, Frame, 30:17.2; two-mile relay, Pam Buckberry, W. Wolfgang, Collins, Stephanie Roberts, 10:34.1; sprint medley, A. Wolfgang, Sue Young, Carolyn Chandler, Laura Damm, 3:04.4; intermediate medley, Frame, W. Wolfgang, Carol Warren, Buckberry, 7:39.2; mile relay, A. Wolfgang, Young, Warren, Damm, 4:27.9.

Fifth-place relays were the shuttle hurdles, A. Wolfgang, Amanda Holmes, Kerry Henderson, Tift, 1:15.1; and the shot

Boys Track Team Loses to Lincoln

Chelsea boys track team gave it a good try in their meet with Southeastern Conference front-runner Lincoln last Thursday at Milan but came up on the short end of a 76-56 score. It was the Bulldogs' first dual meet defeat of the season and left them with a 3-1 mark in the SEC.

As coach Pat Clarke had feared, Chelsea's lack of strength in the dashes and the long jump proved to be the difference. The Bulldogs picked up a total of only three points in the three dashes and the jump, and lost all three relays.

"We did about as well as we could," Clarke said, "and we showed improvement, but Lincoln was just too strong for us."

The Bulldogs sparkled in the distance events. Mark Brosnan won the half-mile and mile, and Allen Cole the two-mile. Chelsea bright spots in the field events included pole vault and a first by Gar DeYoe in the discus.

Clarke was encouraged by the showing of Brosnan, who is getting back into shape after a siege of illness which set him back on conditioning. "Mark should be ready to start running three events per meet next week," Clarke said. "His times haven't been exceptional because we

Boys Track Team Fourth In Relays

Having been defeated by Lincoln in a dual meet earlier last week, Chelsea's track team lost again to the explosive Railsplitters in the Cardinal Relays at Michigan Center last Saturday.

Lincoln won the seven-school affair with 53 points, followed by Mason (39) and Saline (34). Chelsea finished fourth with 32.

"I'm not sure just what a meet like this means," Bulldog coach Pat Clarke said. "There were a lot of 'trick' events, specialty relays that aren't ordinarily run in track and field, so it's very difficult to evaluate performances."

"However, there is no question that Lincoln is very, very good."

Chelsea took two first places, in the pole vault relay and shuttle hurdle relay. (In a field event relay, the heights or distances of the team entrants are added together to determine the winner.)

Eric Buckberry and Darin Rowe made up the winning vault team. Matt McCallum, Mike Hintzen, Mark Spayd and Buckberry combined for the shuttle hurdle victory.

In the so-called intermediate relay, involving a variety of distances, the Chelsea foursome of Mark Brosnan, Scott Cooper, McCallum and Allen Cole came in second.

A distance medley quartet—Eric Green, Steve Hunn, Cole and Brosnan—was third.

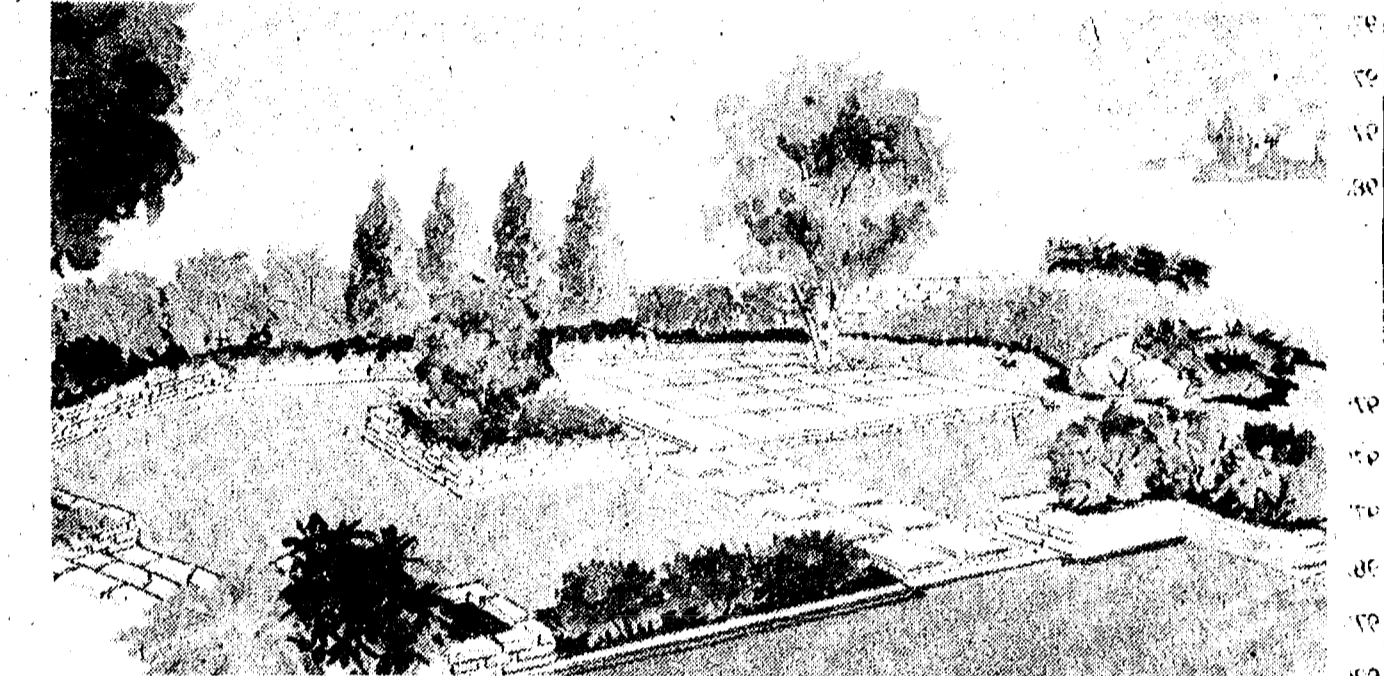
Gar DeYoe, Hintzen and Matt Lorenz teamed for third in the shot put relay, and DeYoe, Frank Waller and Rob Long were third in the discus relay.

Dan Fenton, McCallum, Brosnan and Kyle Kemmish crossed the line third in the mile relay.

Four Bulldog groups earned fifth places:
Two-mile relay—Waller, Craig MacIag, Jared Bradley, Tim Bowdish.
440-Yard relay—Kevin Richardson, Hintzen, Dave Wojcicki, Randy Krichbaum.
880-yard relay—Same team as 440-yard quartet.

LANDSCAPING

PLANTINGS - TERRACING - DECKS - SIDEWALKS - PATIOS
Free Estimates - Insured - Reference List



HASTINGS TREE FARM & NURSERY
Ph. 475-3479 and 426-3985 NURSERY STOCK IS NOW AVAILABLE

have been telling him to run just fast enough to win and not try to set any records. He showed what he can do when he's pushed when he ran a good 2:02.2 half-mile to beat a tough runner from Lincoln."

Chelsea place-winners included:
120-yard high hurdles—Matt McCallum second, Mark Spayd third.
330-yard low hurdles—Mike Hintzen second, McCallum third.
220-yard dash—Randy Krichbaum third.
Mile run—Brosnan first (4:43.4), Cole second, Tim Bowdish third (a slam).
880-yard run—Brosnan first (2:02.2), Steve Hunn third.
Two-mile run—Cole first (10:15), Jared Bradley second, Bowdish third (a slam).
440-yard dash—Scott Cooper third.
Long jump—Cooper third.
Discus—DeYoe first (130' 4 1/2").
High jump—Randy Krichbaum third.
Shot put—Mike Hintzen first (43' 1 1/2"), Matt Lorenz third.
Pole vault—Eric Buckberry first (13'), Darin Rowe second, Ed Brosnan third (a slam).

ATTENTION

All present and former Chelsea wrestlers, 17 years of age and over, are invited to compete in the Junior and Open Wrestling Tournament on May 14 at Dexter High School.

Weigh-in will be on Saturday, May 14, from 8:00-9:00 a.m. Wrestling will begin shortly after.

Call 426-4934 for more information.

SPRING SAVINGS

VILLAGE MOBIL, INC.

NOW OPEN 24 HOURS

OIL-TO-GO SPECIAL

<ul style="list-style-type: none"> Change it yourself and save! Save on gas - 25,000 miles or 1 year between oil changes, whichever comes first! Mobil 1 exceeds all new car warranty requirements. 	<ul style="list-style-type: none"> Change it yourself and save! Helps engines run cleaner Helps engines run longer Reduces wear and corrosion Keeps oil consumption low 	<ul style="list-style-type: none"> Change it yourself and save! Save on gas Gives easier cold weather starting Reduces wear and corrosion Meets all new car warranty requirements 	<ul style="list-style-type: none"> Change it yourself and save! Reduces oil consumption Helps engines last longer Reduces wear and corrosion Meets all new car warranty requirements
--	--	--	---

\$2.69_{QT.} **69_{QT.}** **\$1.20_{QT.}** **\$1.10_{QT.}**

With Mail-in Rebate of \$1.50 on a 5-quart purchase
Limit 1 per household

DEXTER MILL

Purina Dealer 3515 Central St., Dexter Ph. 426-4621 or 426-4622

SAVE NOW WITH THESE GOOD AS GOLD

PURINA DISCOUNTS

Hurry, coupons expire June 4, 1983!

<p>STORE COUPON EXP. DATE: 6/4/83</p> <p>One Coupon per purchase.</p> <p>SAVE \$1.00</p> <p>ON 50-LB. BAG</p> <p>LAYENA brand LAYING RATION</p>	<p>STORE COUPON EXP. DATE: 6/4/83</p> <p>One Coupon per purchase.</p> <p>SAVE \$1.00</p> <p>ON 50-LB. BAG</p> <p>Field 'n Farm brand DOG MEAL</p>	<p>STORE COUPON EXP. DATE: 6/4/83</p> <p>One Coupon per purchase.</p> <p>SAVE \$1.00</p> <p>ON 20-LB. BAG</p> <p>Cat Chow brand CAT FOOD</p>
--	--	---

TRUCK LOAD SALE

On a complete line of refreshing products, including the **R.C. 100** new **R.C.** regular & sugar free

Buy Now and Save \$\$ 8 pack 1/2 Liter bottles **\$1.55** Plus Deposit

- ★ R.C. Cola
- ★ Diet Rite Cola
- ★ R.C. 100
- ★ R.C. 100 sugar free

Best Price Around

ALL-SUMMER SPECIAL

When you fill-up with 8 gals. or more on our FULL SERVICE ISLAND you get 2 - 1/2 liter bottles of Pepsi, Coke or R.C. FREE

We check oil and wash windshields

COMPETITIVE PRICES ON FINE MOBIL GASOLINE

and **PETROLANE L.P. GAS**

MAY GROCERY SAVINGS

Grade A Large EGGS 59^c doz.	BALL PARK FRANKS 16-oz. pkg. \$1.49
---	--

Church Services

Methodist—
SALEM GROVE UNITED METHODIST
 3320 Notten Rd.
 The Rev. Dale B. Ward, Pastor
 Every Sunday—
 9:30 a.m.—Sunday school.
 10:30 a.m.—Morning worship.
 7:00 p.m.—Youth Fellowship.
FIRST UNITED METHODIST
 Parks and Territorial Rds.
 The Rev. Larry Nichols and
 The Rev. David Goldsmith, Pastors
 Every Sunday—
 9:15 a.m.—Morning worship.
 10:00 a.m.—Sunday school.
WATERLOO VILLAGE UNITED METHODIST
 818 Washington St.
 The Rev. Larry Nichols and
 The Rev. David Goldsmith, Pastors
 Every Sunday—
 10:00 a.m.—Sunday school.
 11:15 a.m.—Worship service.
FIRST UNITED METHODIST
 128 Park St.
 The Rev. Marvin H. McCallum, Pastor
 Inspiration Line: 475-1852.
 Tuesday, May 10—
 7:30 p.m.—Parish-staff relations committee. Litteral Room.
 Wednesday, May 11—
 3:30 p.m.—Praise choir.
 6:45 p.m.—Carollers.
 7:15 p.m.—TInnabulators
 8:00 p.m.—Chancel choir.
 Sunday, May 15—
 8:00 a.m.—Men's fellowship, education building.
 9:00 a.m.—Worship service, crib nursery.
 10:00 a.m.—Worship service, crib nursery for infants up to the age of two and church school for preschoolers.
 10:25 a.m.—Kindergarten-sixth graders leave sanctuary to attend music sessions.
 10:55 a.m.—Church school classes begin for K-8.
 11:00 a.m.—Church school classes begin for junior highs, senior highs, and adults.
 11:55 a.m.—All church school classes dismissed.
 6:00 p.m.—Kinder and Praise choir program, followed by dessert fellowship in narthex.
 Tuesday, May 17—
 7:30 p.m.—Wesleyan Circle, Crippen Building.
NORTH LAKE UNITED METHODIST
 The Rev. David Strobe, Pastor
 Every Sunday—
 9:00 a.m.—Church school.
 10:15 a.m.—Worship service.
 Nursery available.
CHELSEA FREE METHODIST
 7655 Werkner Rd.
 Mearl Bradley, Pastor
 Tuesday, May 10—
 Pastor's Prayer Day, S.A.
 7:00 p.m.—Conference NEGB board, A.A.
 Wednesday, May 11—
 6:30 p.m.—Junior choir.
 7:00 p.m.—Mid-week service.
 Thursday, May 12—
 7:30 p.m.—Evangelism class.
 7:30 p.m.—Growth groups.
 Friday, May 13—
 7:00 p.m.—Senior banquet, party, dinner, films, ending with breakfast Saturday.
 Winning Women retreat, Kalamazoo.
 Saturday, May 14—
 Junior high bike ride.
 8:15 p.m.—Adult Bible study.
 Sunday, May 15—
 9:45 a.m.—Sunday school.
 10:00 a.m.—Hospital ministry.
 11:00 a.m.—Morning worship, Pastor Harold Weinman.
 8:00 p.m.—Evening worship, Dave Anderson.
 Farewell for Andersons.
 Monday, May 16—
 7:30 p.m.—Church nominating committee.
 7:30 p.m.—TRI-W.
METHODIST HOME CHAPEL
 The Rev. Ira Wood, Chaplain
 Every Sunday—
 8:45 a.m.—Worship service.
SHARON UNITED METHODIST
 Corner Pleasant Lake Rd. and M-52
 The Rev. Ronald L. Irls, Pastor
 Every Sunday—
 10:00 a.m.—Sunday school.
 11:00 a.m.—Worship service.

Lutheran—
ST. JACOB EVANGELICAL LUTHERAN
 The Rev. Andrew Bloom, Pastor
 12601 Rietmiller Rd., Grass Lake
 Every Sunday—
 9:00 a.m.—Sunday school.
 10:15 a.m.—Divine services.
ST. THOMAS EVANGELICAL LUTHERAN
 Ellsworth and Haab Rds.
 The Rev. Paul Puffe, Pastor
 Every Sunday—
 9:30 a.m.—Sunday school.
 10:45 a.m.—Worship service.
FAITH EVANGELICAL LUTHERAN
 6675 North Territorial Rd.
 The Rev. Mark Porinsky, Pastor
 Tuesday, May 10—
 6:45 p.m.—Confirmation, second year only.
 Kindergarten round-up.
 Wednesday, May 11—
 9:30 a.m.—Bible brunch.
 4:00 p.m.—Junior choir.
 7:00 p.m.—Inquirers.
 Thursday, May 12—
 7:30 p.m.—Ascension Day worship service.
 8:15 p.m.—Choir.
 Sunday, May 15—
 8:45 a.m.—Sunday school, adult class.
 10:00 a.m.—Worship service, confirmation examination.
 7:30 p.m.—FVLIHS conference.
 Monday, May 16—
 7:30 p.m.—Ladies Aid at Julie Knight's.
OUR SAVIOR LUTHERAN
 1515 S. Main, Chelsea
 The Rev. Franklin H. Giebel, Pastor
 Every Sunday—
 9:00 a.m.—Sunday school.
 10:30 a.m.—Worship service.
 (Holy communion 1st, 3rd and 5th Sunday)
 A schedule of Bible Classes is available by calling 475-7849.
ZION LUTHERAN
 Corner of Fletcher and Waters Rds.
 The Rev. John R. Morris, Pastor
 Tuesday, May 10—
 4:00 p.m.—Joy-makers.
 7:15 p.m.—Senior choir.
 Wednesday, May 11—
 7:30 p.m.—Church council.
 Thursday, May 12—
 7:30 p.m.—Altar Guild.
 Saturday, May 14—
 1:30 p.m.—Senior Citizens.
 Sunday, May 15—
 9:00 a.m.—Sunday school, all ages. Adult Inquirer's class.
 10:15 a.m.—Worship service, Rural Life Sunday.
 12:30 p.m.—James Dobson film, "What Wives Wish Their Husbands Knew About Women: Lonely Housewife, Money, Sex and Children."
 7:00 p.m.—Dobson film, second showing, same site.
 Monday, May 16—
 9:00 a.m.—Clergy Day, Catherine McAuley Health Center, Mercywood.
 Tuesday, May 17—
 4:00 p.m.—Joy-makers.
 7:15 p.m.—Senior choir.
TRINITY LUTHERAN
 5758 M-36, three miles east of Gregory
 William J. Trosten, pastor
 878-5877 church, 878-5018, pastor
 Every Sunday—
 8:00 a.m.—Worship service.
 9:30 a.m.—Sunday and Bible school.
 10:45 a.m.—Worship service.

United Church of Christ—
ST. JOHN'S EVANGELICAL AND REFORMED
 Francisco
 The Rev. Paul McKenna, Pastor
 Every Sunday—
 10:30 a.m.—Sunday school and worship service.
 First Sunday of every month—
 Communion.
BETHEL EVANGELICAL AND REFORMED
 Freedom Township
 The Rev. Roman A. Reineck, Pastor
 Every Sunday—
 10:00 a.m.—Worship service.
ST. PAUL
 The Rev. Erwin R. Koch, Pastor
 Tuesday, May 10—
 1:30 p.m.—Women's Fellowship.
 7:00 p.m.—Teachers meeting.
 8:00 p.m.—C.E. department.
 Wednesday, May 11—
 6:30 p.m.—Chapel choir rehearsal.
 6:30 p.m.—Confirmation banquet.
 7:30 p.m.—Chancel choir rehearsal.
 Thursday, May 12—
 7:30 p.m.—Spiritual Life.
 Friday, May 13—
 Annual conference at Olivet College, through Saturday.
 Sunday, May 15—
 9:00 a.m.—Church school.
 10:30 a.m.—Morning worship, seventh Sunday in Easter tide, The Rev. Thode Thodeson, guest speaker, church school.
 Monday, May 16—
 7:30 p.m.—Confirmation rehearsal.
 Courier articles due.
 Tuesday, May 17—
 6:00 p.m.—XYZ pot-luck, Bethlehem UCC.
 7:30 p.m.—Church council.
CONGREGATIONAL
 The Rev. Carl Schwarm, Pastor
 Every Sunday—
 10:30 a.m.—Worship and Sunday school
 Nursery provided for pre-schoolers during worship.
 Second Thursday—
 1:00 p.m.—Women of the Church.
 Weekly Bible study—As scheduled in Sunday bulletin.
 Youth groups—As scheduled in Sunday bulletin.
 Adult Fellowship group—As scheduled in the Sunday bulletin.
ST. JOHN'S
 Rogers Corners, Waters and Fletcher Rds.
 The Rev. Phyllis Pawson, Pastor
 Every Sunday—
 10:30 a.m.—Worship service, Sunday school.
Episcopal—
ST. BARNABAS
 The Rev. Fr. Jerrold F. Beaumont, B.S.P.
 Chelsea
 Every Sunday—
 9:30 a.m.—Christian education, adult and children's classes.
 10:30 a.m.—Holy Communion first, third and fifth Sundays.
 10:30 a.m.—Morning Prayer, second and fourth Sundays.
 Nursery available every Sunday. Coffee hour follows all Sunday services.
 First Sunday of the month—
 Pot-luck dinner follows the service. All are welcome.
 First Monday of the month—
 7:30 p.m.—Bishop's Committee.
 Every Wednesday—
 6:15 p.m.—Choir practice.
 7:15 p.m.—Soup and sandwich supper.
 7:45 p.m.—Holy Communion.
 8:30 p.m.—Bible Study class open to all.

Assembly of God—
FIRST ASSEMBLY OF GOD
 The Rev. Richard Coury, Pastor
 Every Sunday—
 9:45 a.m.—Sunday school.
 10:30 a.m.—Worship service and Sunday school nursery for pre-schoolers.
 6:00 p.m.—Evening worship.
 Every Wednesday—
 7:00 p.m.—Christ's Ambassadors. Bible study and prayer.
Mormon—
CHURCH OF JESUS CHRIST OF LATTER-DAY SAINTS
 Chelsea Branch-Rebekah Hall
 Every Sunday—
 9:30 a.m.—Sacrament.
 10:50 a.m.—Sunday school.
 11:40 a.m.—Priesthood.
Baptist—
CHELSEA BAPTIST
 337 Wilkinson St.
 The Rev. Barry Hampton, Pastor
 Every Sunday—
 9:45 a.m.—Sunday school.
 11:00 a.m.—Morning worship.
 11:20 a.m.—Junior church school.
 6:00 p.m.—Evening fellowship.
 Every Wednesday—
 7:00 p.m.—Mid-week Bible study and prayer.
GREGORY BAPTIST
 The Rev. David Brinkman, Pastor
 Every Sunday—
 9:45 a.m.—Sunday school.
 11:00 a.m.—Morning worship.
 6:00 p.m.—Evening people.
 7:00 p.m.—Evening worship.
FELLOWSHIP BAPTIST
 The Rev. Larry Mattis, pastor
 Every Sunday—
 3:00 p.m.—Worship service at the Rebekah Hall.
 Every Wednesday—
 7:30 p.m.—Bible Study and prayer at the Village Apartments, No. 106.

Non-Denominational—
CHELSEA FULL GOSPEL
 11442 Jackson Rd.
 The Rev. Chuck Clemons, Pastor
 Every Sunday—
 10:00 a.m.—Sunday school.
 11:00 a.m.—Morning worship.
 6:30 p.m.—Evening worship.
 Every Wednesday—
 7:00 p.m.—Midweek prayer and Bible study.
IMMANUEL BIBLE
 145 E. Summit St.
 The Rev. Ron Little, Pastor
 Every Sunday—
 9:45 a.m.—Sunday school, nursery provided.
 11:00 a.m.—Morning worship, nursery provided.
 6:00 p.m.—Evening worship.
 Every Wednesday—
 7:00 p.m.—Family hour, prayer meeting and Bible study.
COVENANT
 Dr. R. J. Ratzliff, Pastor
 501 Freer Rd.
 Every Sunday—
 9:00 a.m.—Sunday school.
 10:30 a.m.—Worship and nursery.
MT. HOPE BIBLE
 12884 Trist Rd., Grass Lake
 The Rev. R. H. Brandow, Pastor
 Every Sunday—
 10:30 a.m.—Sunday school.
 11:00 a.m.—Morning worship.
 7:00 p.m.—Evening service.
 Every Wednesday—
 7:00 p.m.—Bible study.
NORTH SHARON BIBLE
 Sylvan and Washburne Rds.
 The Rev. William Enslin, Pastor
 Every Sunday—
 10:30 a.m.—Sunday school.
 11:00 a.m.—Worship service.
 6:00 p.m.—Senior High Youth meeting, Youth choir.
 7:00 p.m.—Evening worship service. (Nursery available.) All services interpreted for the deaf.
 Every Wednesday—
 7:00 p.m.—Bible study and prayer meeting. (Nursery available.) Bus transportation available: 428-7222.
CHELSEA CHRISTIAN MEN'S FELLOWSHIP PRAYER BREAKFAST
 Chelsea Hospital Cafeteria
 First Saturday Each Month—
 11:00 a.m.—Breakfast.
 8:30-10:00 a.m.—Program.
CHELSEA HOSPITAL MINISTRY
 Every Sunday—
 10:00 a.m.—Morning service, Chelsea Community Hospital Cafeteria.
Church of the Nazarene—
SOUTHWEST CHURCH OF THE NAZARENE
 14555 Holmes Rd. (M-106)
 The Rev. Frank LaLone, pastor
 Every Sunday—
 10:00 a.m.—Sunday school.
 11:00 a.m.—Morning worship.
 8:00 p.m.—Evangelical service.
 Every Wednesday—
 7:00 p.m.—Bible Study and Prayer Meeting.
Christian Scientist—
FIRST CHURCH OF CHRIST SCIENTIST
 1883 Washtenaw Ave., Ann Arbor
 Every Sunday—
 10:30 a.m.—Sunday school, morning service.

Church Women United Name Kathleen Chapman Area Chairperson

Caralee Hoffmeyer, Joy Stacey and Kathleen Chapman of Chelsea attended the 54th annual assembly of Church Women United in Kalamazoo held recently in Kalamazoo. Mrs. Chapman was elected chairperson for Area 3 which includes five counties in southeastern Michigan.

The 320 women attending the assembly were welcomed by Mildred Hedrick, Kalamazoo unit president, and Kalamazoo mayor Caroline Ham.

Keynote speaker, Sister Marjorie Tuite of New York City, said "It's the women who take the risk to 'catch the light'. It's a way of faithfulness... and a task that is political. It enables us to act and move ahead; to choose justice, to choose peace with justice. We must issue a 'call to our Congress people to say no to arms build-up, to interference in Central America'."

Sister Marjorie's recent visits to Central America cause her to bring the message that it is a "hoax" that we are made to believe the conflict is between East and West. The conflict is between the rich and the poor of the nations, the owners of the land and the landless.

Bible study leader, the Rev. Gail Hendrix, spoke of the darkness and chaos in a world where drugs, pollution, family violence, war and the danger of nuclear annihilation threaten us all.

Workshops included one on Central Africa, led by Dr. Joshua Muvumba from Uganda. He described his life, moving from his stable, traditional, Christian childhood through the chaos of change in Uganda as it became an independent country.

Other workshops included boycotting, women's issues, biblical base for peacemaking, native Americans, holistic health, parenting and grandparenting for peace and justice, global living in a nuclear age, affirmative parenting, people of the Pacific Islands, United Nations report card, hospice, the church and its outreach in the global economy, women alone, legislative concerns, public relations and newsletter production, and TV-tune-in, a monitoring program.

The assembly closed with the installation of officers for 1983-84.

Village Taxes

(Continued from page nine)

(\$17,238) as compared to last year's 257 (\$12,586). Again, the large amount is required because of the payoff schedule.

Total levy, including the three special funds, would be 9.63 mills, up .837 from last year's 8.793. In all, tax collections would increase by about \$8,000, from \$430,618 to \$438,663.

Scott Robertson on Lansing Community College Honor Roll

Scott Robertson of Chelsea will be recognized at Lansing Community College's honors convocation May 25 for maintaining a grade point average of 3.75 or higher.

He will receive a degree in fire science in June.

Standard Classified ads get quick results!

Almighty Father

Life is Your most sacred gift
 You implanted divine life in Mary
 And she gave birth to the Savior of the world
 You share divine life with each of us.

A child of Mary,
 Millie Warner

COVENANT CHURCH GARAGE SALE

50 N. FREER RD., CHELSEA

Fri., May 20 9 a.m. to 7 p.m.
 Sat., May 21 9 a.m. to 5 p.m.

PUBLIC AUCTION WEDNESDAY, MAY 18

11:00 A.M.

Located 14044 Red Barn Circle, Chelsea, Michigan. 1 mile north of Chelsea on M-52 to Werkner Rd., north 5 miles (stay on blacktop) to Territorial Rd. 1/4 mile east to Riker Rd., or 10 miles west of US-23 on Territorial Rd. to Riker Rd., south to Red Barn Circle. (Watch for Auction Signs).

Once in a Lifetime Opportunity for the PRIMITIVE Collector Dealers. Hundreds of Items. COME - YOU'LL BE GLAD YOU DID

PRIMITIVES: Tinware (350 Pcs.), Cast Iron (50 pcs.), Woodenware (50 Pcs.), Grocery Scales, Bells, Spice Grinder, Cloth Pleating Unit, Candle Mold, Wall Coffee Grinder, Sausage Stuffer, Locks, Stoneware, Jugs, 2 Soda Fountain Dispensers, Kerosene Burners, Lanterns, Trivets, Muffin Pans, Shoe Last, Carpet Beaters, Fire-place Trammel, Several Brass Items, Kerosene Lamps, Most Every Kind of Kitchen Utensil.

FURNITURE: Frigidaire Ref-Freezer, Walnut 5 Drawer Museum Display Rack, Pine Stenciled Blanket Chest, 24 Drawer Hardwood Cabinet, Color Prints, Pictures, Frames.

GLASS & CHINA: 16" Reverse Painted Table Lamp Shade, 8 Old Pattern Glass Pitchers - 7 Milk Pitchers - 7 Creamers. Empress Cov. Butter, Pr. Black Amethyst Loving Cups, 3 Dozen Old Bottles - Cobalt - Amber - Crystal. Pattern Glass Cruets, Thistle Open Sugar, Crystal Syrup w/Lid, "Corn" Finger Lamp & Others, Master Salts, 3 Blue Transfer Historical Plates, Mulberry Transfer Plate, Hand Painted Bowls & Plates, Wedgwood Blue & White Jasperware Candlesticks, Ironstone Gravy Boat, Tea Leaf Coffee Pot (No lid), Elk Cramer, Pr. Occ. Japan Figurines, 8 Japan Bisque Figurines, Blue Stoneware Wall Salt Box, etc.

MISC.: Baseball Cards (26), Athletic Cards (6), Cigarette Cards (32), Post Cards, 12 Albums No. 78 Records (B. Goodman, S. Jones, H. James, T. Dorsey), Sterling Candlesticks, 3 pc. Gold Plated Last Rights Set, 1893 Worlds Fair Book, Some Hand Tools.

TERMS: Cash, Travelers Checks, Personal Checks from Regular Customers.
 REGISTER FOR BUYERS NUMBER.
 L&W LUNCH WAGON
 Not Responsible for Accidents or Items After Sold

WARREN MANN, OWNER

Mail and Phone Bids Accepted.
 Sale Manager & Auctioneer
 EVERETT R. MILLER
 River Junction, MI 49227 Ph: 517-369-3443
 "Good Management Does Not Cost-It Pays"

KITCHEN REMODELING

We at Dutch Country are kitchen remodeling specialists.
Expert installation available.
Free design layout service.

★ Featuring: **HAND CRAFTED AMISH CABINETS.**
 ★ Custom Quality Cabinetry by Fieldstone.
 ★ Jenn-Air Appliances ★ Delta Faucets ★ Elkay & Kohler Sinks.

VISIT OUR SHOWROOM

DUTCH COUNTRY KITCHENS

146 E. Main 428-7292 Manchester

MENTAL ILLNESS MYTHS Myth #2

Everyone Who's Mentally Ill Acts 'Crazy'

Unfortunately, and often tragically, the fear of being labeled "crazy" prevents some people with emotional problems from seeking the professional help they need. Yet few people with such problems act "crazy."

The point is, get help if you need it. And share your feelings and problems with a trained professional.

MAY IS MENTAL HEALTH MONTH
 This message is sponsored by Mercywood Hospital, a unit of the Catherine McAuley Health Center, Ann Arbor.

Sponsored by the Religious Sisters of Mercy founded in 1831 by Catherine McAuley

Mercywood Hospital
 4038 Jackson Road
 P.O. Box 1127
 Ann Arbor, Michigan 48106

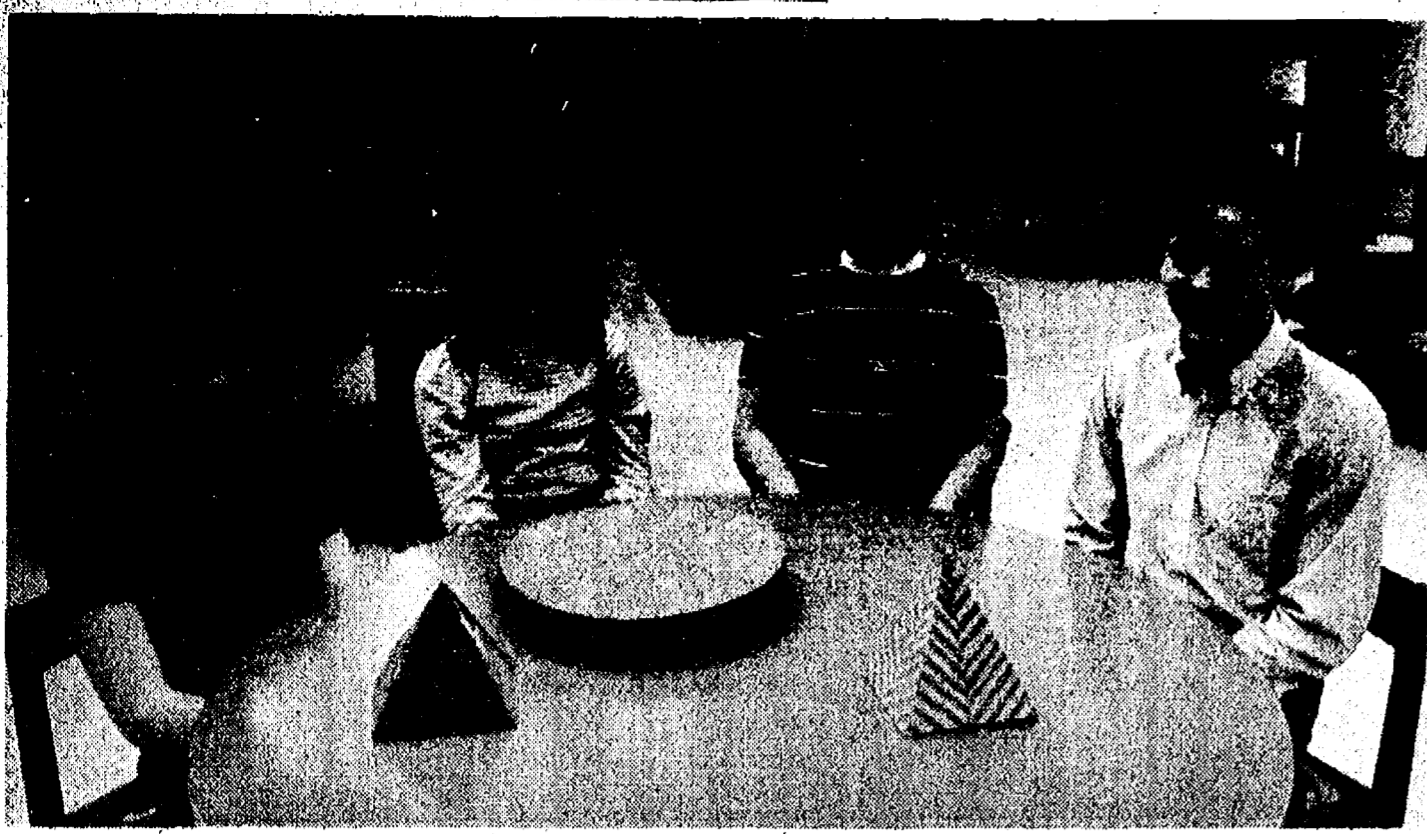
MARGIE'S UPHOLSTERY

FREE ESTIMATES

- Large Selection of Materials
- Upholstery Supplies
- Repair Service

Pick-Up and Delivery Available

MARJORIE SMITH
 Ph. 1 (517) 536-4230
 Call Collect between 8 a.m.-6 p.m. Monday thru Saturday
 6245 Brooklyn Rd., Napoleon



MATH WHIZZES: Four Beach Middle school students qualified for the state-wide mathematics test to be given May 21 at Central Michigan University. They are Steve Radant, left, Callisa Tucker, Jeff Waldyke and Mark Pletcher.

Four Beach Students Qualify For State Math Competition

Four Beach Middle school students qualified for state level mathematics competition by placing among the top 25 in their grade level at regional competition April 23 at Lansing Community College.

More than 500 students (10 from Beach) took the regional test sponsored by the Michigan

Council of Teachers of Mathematics. The state test will be given May 21 at Central Michigan University.

Mark Pletcher, an eighth grader competing for the second year, took 17th. Jeff Waldyke, a seventh grader who took second last year in the region, took fifth this year.

In the sixth grade competition, Steve Radant took sixth, and Callisa Tucker placed 23rd.

The students should be congratulated, said Betty Cox, middle school mathematics teacher, for doing so well on a difficult test.

Each received a certificate for making the top 25.

County Assessments Total Declines 1.8%

The county equalization report accepted by the county commissioners April 27 shows an over-all decline of 1.8 percent in assessments.

A decline in residential property values in all four cities in the county and in 18 of its 20 townships was a key factor.

Among the following townships, Dexter, Freedom, Lima, Lyndon, Sharon and Sylvan, only Lyndon's CEV increased.

Lyndon's increase was for the entire township. Chelsea school district covers only part of Lyndon, and the school's property tax income from Lyndon actually went down.

Valuations for the CEV are assigned by George Kostishak, county equalization director, and his staff. They base their studies on recent sales prices for property in each class.

Where local assessors were judged to be underassessing property, the equalization department

assigned percentage factors to bring them up to the legal requirement of 50 percent of market value.

The State Tax Commission reviews CEVs in May and could change percentage factors if it wishes. Kostishak has said he's been told the new CEV will be accepted as this year's SEV.

CEV figures on the six local townships follow:

Lyndon—1983 CEV, \$28,281,837; 4.3 percent increase from 1982 SEV of \$27,120,043. Residential and agricultural property dropped 4.3 and 1.2 percent, respectively.

Dexter—1983 CEV, \$60,210,554; 6.3 percent drop from 1982 SEV of \$63,978,309. Residential property dropped 6.9 percent. Commercial, industrial and agricultural property increased 4.9, 4.4 and 3.1 percent, respectively.

Freedom—1983 CEV, \$30,293,350; 1.5 percent drop from 1982 SEV of \$30,745,692. Residential property dropped 3.8 percent. Commercial, industrial and agricultural property increased 6.6, 4.9 and 7.6 percent, respectively.

Lima—1983 CEV, \$42,008,895; 4.3 percent drop from 1982 SEV of \$43,810,992. Residential property dropped 7.5 percent. Commercial and industrial property increased 6.9 and 3.8 percent, respectively. Agricultural property dropped 2.1 percent.

Sylvan—1983 CEV, \$83,216,105; 7.1 percent drop from 1982 SEV of \$89,136,507. Residential, industrial and agricultural property dropped 11.5, 3.4, and 4.9 percent, respectively. Commercial property values increased 6.7 percent.

Sharon—1983 CEV, \$23,649,702; 0.8 percent drop from 1982 SEV of \$23,892,185. Residential property dropped 3.0 percent. Commercial decreased 0.1 percent; industrial showed no change, and agricultural property values increased 0.4 percent.

SCHOOL LUNCH MENU

Weeks of May 10-20
Tuesday, May 10—Home-made Italian spaghetti, buttered green peas, warm french bread with butter, fruit compote.

Wednesday, May 11—Fruit punch, tacos with sauce, lettuce, tomato and cheese, buttered corn, cake.

Thursday, May 12—Hot ham and cheese sandwich, oven fries, carrot and celery sticks, chilled apricots.

Friday, May 13—Cheese and sausage pizza, lettuce salad with dressing, fresh fruit, butterscotch pudding.

Monday, May 16—Chicken patty on bun, potato chips, dill pickles, peach half.

Tuesday, May 17—Beef ravioli, buttered green beans, bread and butter, brownies.

Wednesday, May 18—Cheeseburger on bun, oven brown potato, vegetable sticks, diced pears.

Thursday, May 19—Crispy fish fillet, tater tots, cole slaw, dinner roll with butter, sliced pineapple.

Friday, May 20—Cheesy pizza, tossed salad with dressing, fresh fruit, cookie.

Grade Schools Collecting Cereal Seals for Prizes

Elementary school students should turn in their Post cereals Fun and Fitness seals by the end of the school year, said Bill Wehrwein, physical education teacher at both schools.

The seals are traded for physical education equipment. In the past the schools have gotten hockey sticks and goals, soccer balls, a stopwatch, jump ropes and frisbees, said Wehrwein, in exchange for a variety of seals.

Students have been collecting seals since September. Both they and community members may turn in seals to the media center at North school, the office at South school or to Wehrwein.

Births

A daughter, Katrina Lizett, April 22, to Frank and Elizabeth Hamer of 521 East St., Chelsea.

A daughter, Jennifer Louise, April 28 at St. Joseph Mercy Hospital to Rick and Kathy Vershum of Milan. Maternal grandparents are Louis and Dorothy Foreman of North Lake. Maternal great-grandmother is Carrie Foreman of Northville. Paternal grandparents are Dick and Joyce Vershum of Milan, and paternal great-grandparents are Earl and Ruth Reum of Milan.

A son, Jason Richard, April 2 to Richard and Carolyn Pichea of Chelsea. Maternal grandparents are Mrs. Marlene Keezer of Plckney and Norman O'Connor of Gregory. Paternal grandparents are Mrs. Aurelia Pichea of Ann Arbor and the late James L. Pichea. Maternal great-grandmother is Mrs. Esther Schneider of Chelsea.

A daughter, Ashley Johanna, May 1 to Scott and Bonnie Cook of South Lake. Paternal grandparents are Nicholas and Gloria Cook of Westland. Maternal grandparents are Helen Peiler of Melvindale and the late Raymond Peiler. Ashley has a brother, Ryan Nicholas, 2.

Amaryllis Plant Goes Crazy With 16 Big Blossoms

This area not only has a prolific lamb flock—now it has a prolific amaryllis, which is related to the lily and is known for its showy blooms.

William Beach of 10639 Dexter-Chelsea Rd. has an amaryllis which had 16 blossoms at the same time, six on one stem, six on another and four on the third stem.



FRED HARRIS of S. Main St. will have lawn mowers, chain saws, knives watches and tools in his booth at the community flea market May 21 at Chelsea High school. Harris, who has his own fix-it shop, usually doesn't show at flea markets—he

buys instead. But he made an exception because this one benefits Chelsea Community Hospital. All proceeds from booth rental go to projects sponsored by the hospital's auxiliary. To rent a booth call the hospital at 475-1311.



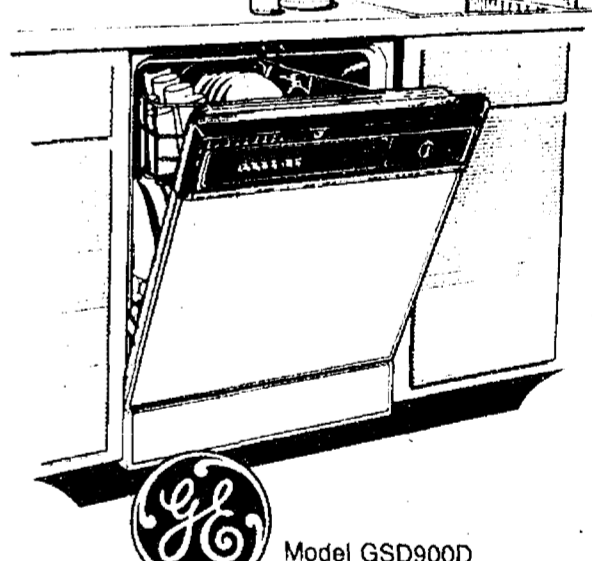
Truckload SALE



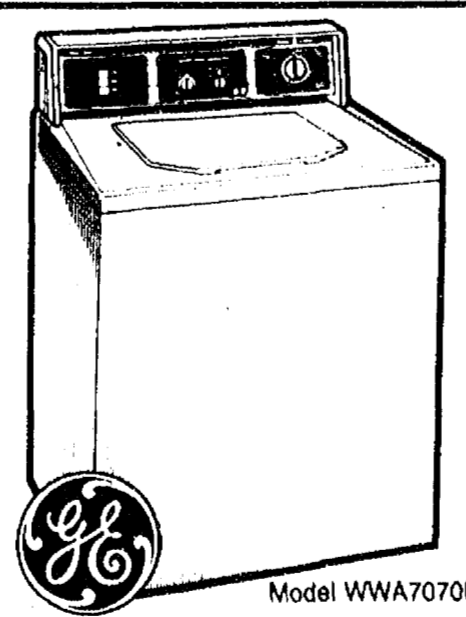
BIG GE 17.2 cu. ft. NO-FROST REFRIGERATOR keeps foods fresh up to 15 days with Moist 'N Fresh, and Cool 'N Fresh pans, 4.73 cu. ft. Freezer, Split-Level Adjustable Steel Shelves, Sealed Snack Pack. Rolls out on wheels. Equipped for optional automatic icemaker.
WAS \$719.95
NOW \$669.95
SAVE \$50.00



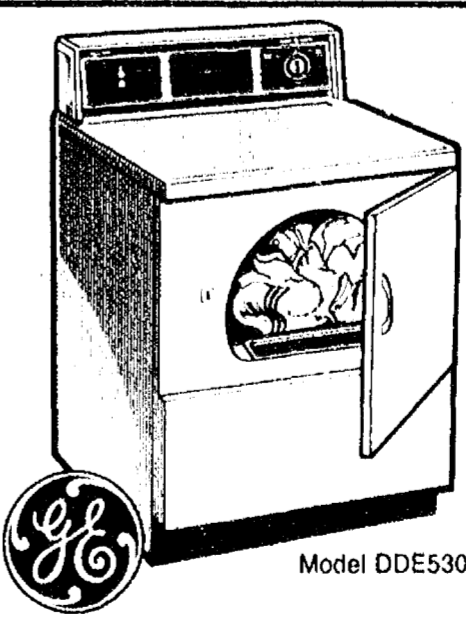
GE P-7* SELF-CLEANING OVEN RANGE with Plug-in Control* Surface Units, Infinite Rotary Controls for precise heat selection, Automatic Oven Timer, Clock and Signal Buzzer.
WAS \$619.95
NOW \$569.95
SAVE \$50.00



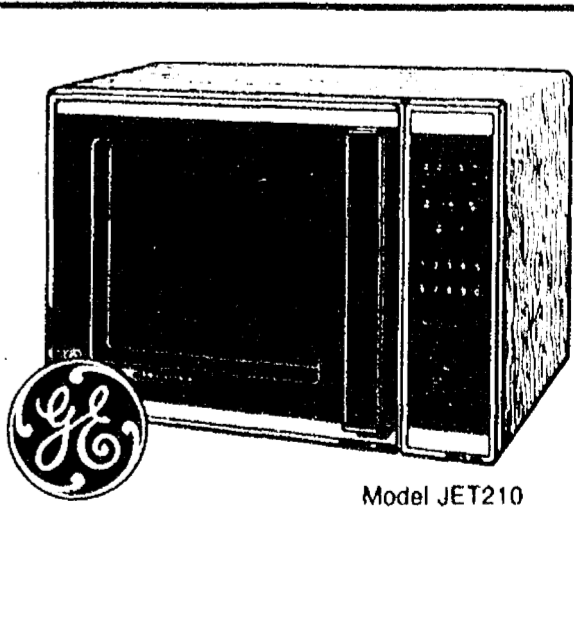
GE POTSCRUBBER* 7-CYCLE DISHWASHER with Temperature Sensor System for consistently clean dishes... can save energy and money, too. 3-Level Washing Action, Energy-Saving Dry Option.
WAS \$519.95
NOW \$469.95
SAVE \$50.00



GE 2-SPEED WASHER WITH MINI-BASKET™ TUB has 4 cycles, including Permanent Press and Mini-Quick, 3 Wash Rinse Temperature Selections with energy-saving cold water selections. Variable Water Level Control.
WAS \$469.95
NOW \$439.95
SAVE \$30.00



GE HEAVY-DUTY AUTOMATIC DRYER with 4 Cycles, including Permanent Press Knit, 3 Drying Selections, Removable Up-Front Lint Filter, Durable Porcelain Enamel Finish Drum.
WAS \$369.95
NOW \$349.95
SAVE \$20.00



GE DUAL WAVE™ MICROWAVE OVEN is designed for good, even cooking results. Has Auto Roast Feature, 10 Power Levels, Defrost Cycle, MicroThermometer™ Temperature Control.
WAS \$489.95
NOW \$449.95
SAVE \$40.00

GE. WE BRING GOOD THINGS TO LIFE.

HEYDLAUFF'S
113 N. Main St., Chelsea Ph. 475-1221

Open Daily 8:30-5:30, TH 8:30 Mon. & Fri.

Open Daily 8:30-5:30, TH 8:30 Mon. & Fri.

Open Daily 8:30-5:30, TH 8:30 Mon. & Fri.



ROBERTA ANNE GUINAN, daughter of Mr. and Mrs. Robert Guinan of 17376 Waterloo Rd., graduated from Wayne State University College of Nursing May 1 with a Bachelor of Science in Nursing degree. She will be employed by Hutzel Hospital in Detroit.

Wheel Horse

B 85 5-speed
FEATURES:
• 8 horsepower synchro-balanced® single cylinder Briggs & Stratton engine
• 5-speed transmission
• Steel frame and cast-iron front axle
• Optional 36" and 37" mowers
• Tills, mows, removes snow and more.
• Service and parts availability

\$1495
Tractor & Mower

B-85
with 36" rear discharge mower

Options:
• 5.5, 10.0 cu. ft. dump carts
• 6 bu. bagger (37" side mower only)
• 37" snowthrower
• 42" blade
• 30" tiller
• And more

GAMBLES
118 N. Main, Chelsea 475-1271
Open Daily 8:30-5:30, TH 8:30 Mon. & Fri.

Wheel Horse